



terrafirma

LANDSCAPE ARCHITECTS

Chartered Landscape Architects with **proven expertise** around the world,
across the **entire spectrum** of **landscape design consultancy** services



terrafirma

LANDSCAPE ARCHITECTS

www.terrafirmaconsultancy.com



Based in the rural town of **Petersfield**, within the **South Downs National Park**, along with satellite offices in **Dubai**, and **Lithuania**, terra firma's work spans the globe - but never without a **personal touch**.

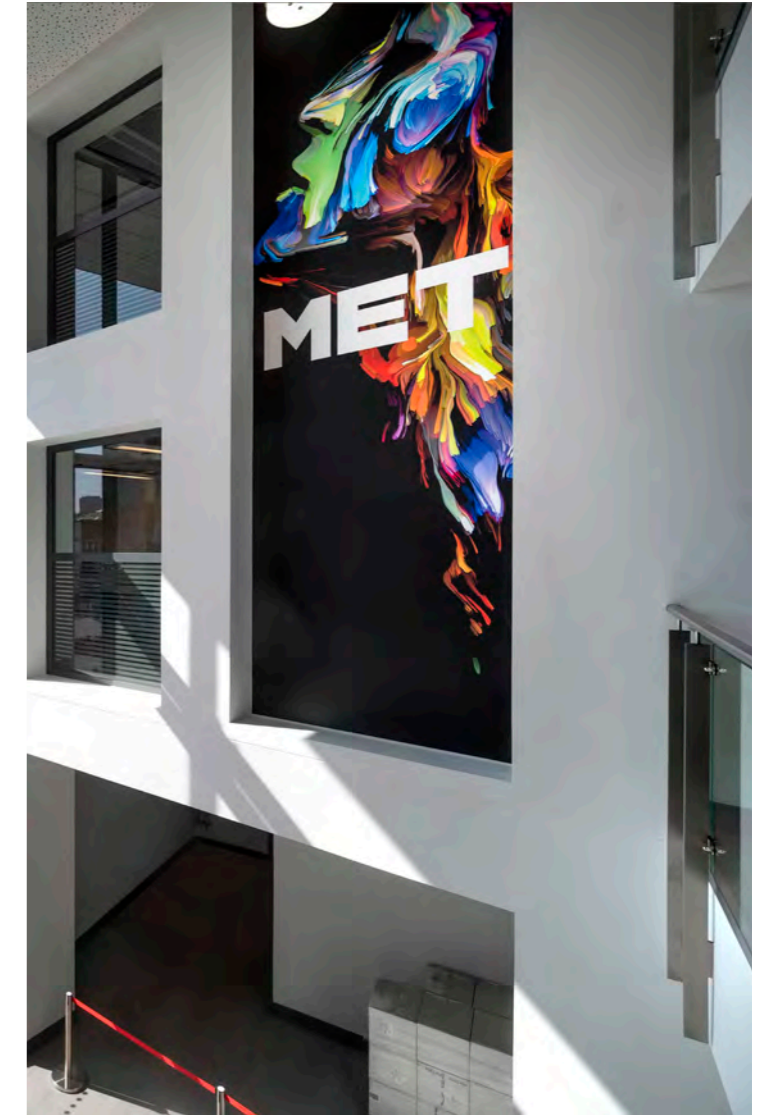
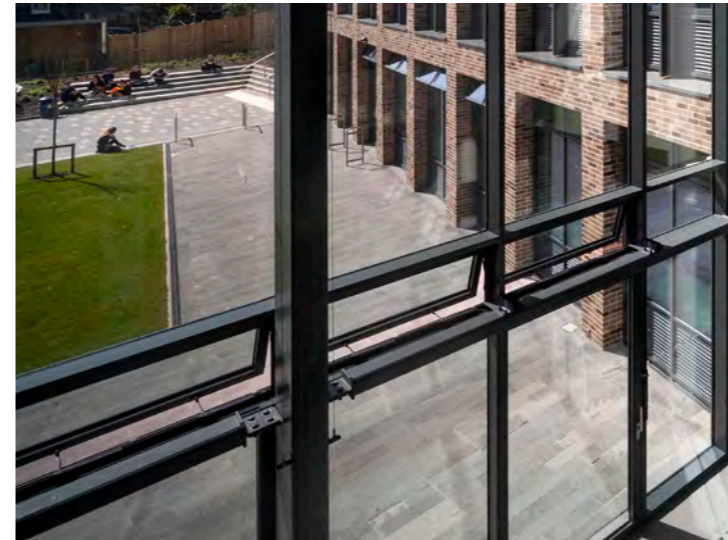
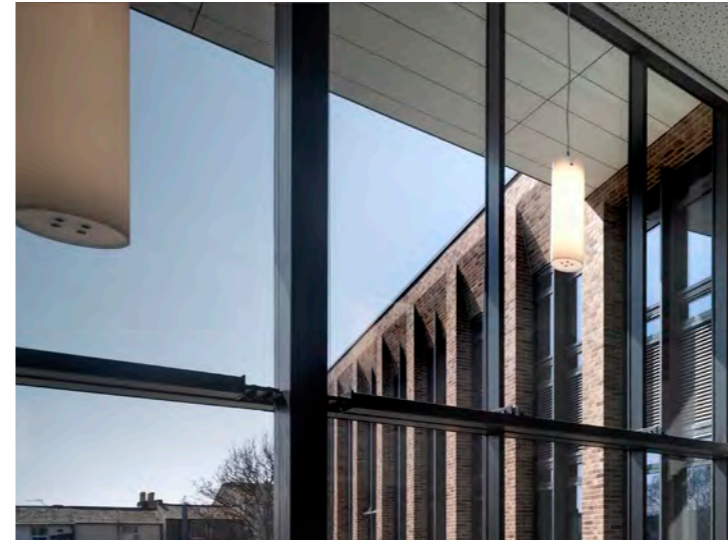
about us

The terra firma Consultancy is a leading UK firm of chartered landscape architects, established in 1985, which has secured the highest reputation for its standard of work in landscape design consultancy services.

Our services encompass the entire range of the landscape architectural profession's remit, from inception, assessment, and concept to delivery and ongoing management beyond, and include large-scale masterplanning and environmental impact assessments, urban landscape design, rural landscape planning and design, as well as landscape architect expert witness to support clients, through to supervision of landscape design, project implementation, and subsequent landscape management.

terra firma's proven expertise has led it to be considered one of the leading consultancies in the field - with projects in over 30 countries across six continents.

The scope of the Practice's work engages the entire spectrum of landscape architecture: strategic landscape masterplans; landscape design for private estates and gardens; upmarket flats and houses; prestigious corporate headquarters; health and community care complexes; sports and leisure centres; schools; college and university buildings; heritage schemes; retail schemes; industrial and office complexes; public parks and open space; theme parks; urban streetscape; waterside; inner-city action programmes; sustainable community initiatives; etc.



30+
countries

38
years of experience

2000+
projects

terra firma is a Landscape Institute Registered Practice, a Law Society Registered Expert Witness, a member of the Urban Design Group, and an associate of the Institute for Environmental Management and Assessment. The practice is a Registered Limited Company, obtained Investors in People Status in 2004, and is certified to quality standard ISO 9001 (2015), and environmental standard ISO 14001 (2015) - keeping both current following regular re-appraisals.

terra firma has been creating simple, sustainable and beautifully designed solutions for a huge range of projects since **1985**.



Lionel Fanshawe has led terra firma since 1996 and was joined by Robyn and Alison, as equal and full directors, in late 2020. Lionel has nearly 40 years of experience across all areas of the landscape architectural profession. He set up the terra firma offices in Dubai and Vilnius, of which he continues an active interest.

Led by the three directors, The terra firma Consultancy Ltd. is a 15-strong team, including eight Chartered Landscape Architects, three Assistant Landscape Architects, and four Junior Technical and Administrative staff.



Robyn Butcher is Director of terra firma, having joined the company in 1995. She has worked on several hundred projects in all sectors; including the award-winning BA i360 public realm scheme for Brighton and Hove City Council. Robyn regularly acts as an expert witness and is involved in all aspects of the Practice and project management.



Alison Galbraith is Director of terra firma, has over 20 years of experience and has been with the company since 2002. She has authored numerous landscape-related studies and led many design projects, including Maggie's Cancer Care Centre in Swansea, and the award-nominated Leonard Cheshire Memorial Garden.



terra firma undertakes design and planning work in every sector; from local government and central government departments, property developers, and private clients, throughout the UK and internationally - with an almost four-decade, innovative, and award-winning track record.

page
Heritage Landscape,
Parks & Gardens **4**



page
Leisure & Tourism **10**



page
Public &
Urban Spaces **15**



page
Health &
Education **21**



page
Residential &
Community **27**



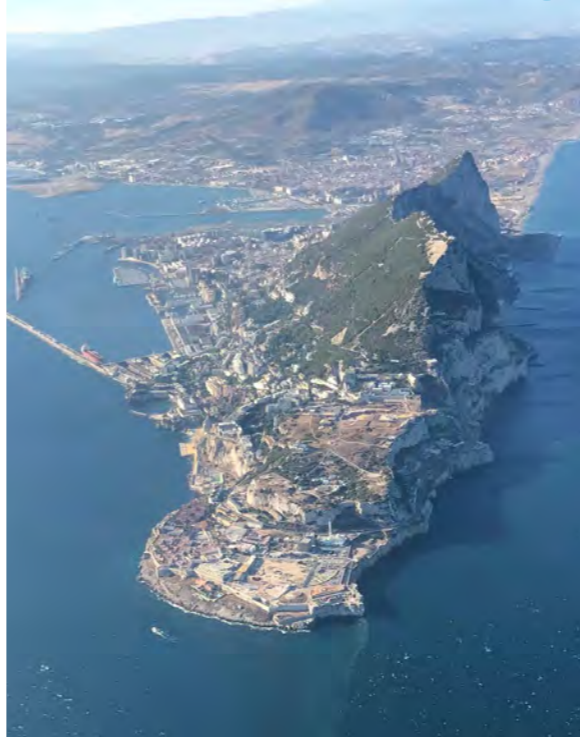
page
Corporate,
Commercial
& Retail **33**



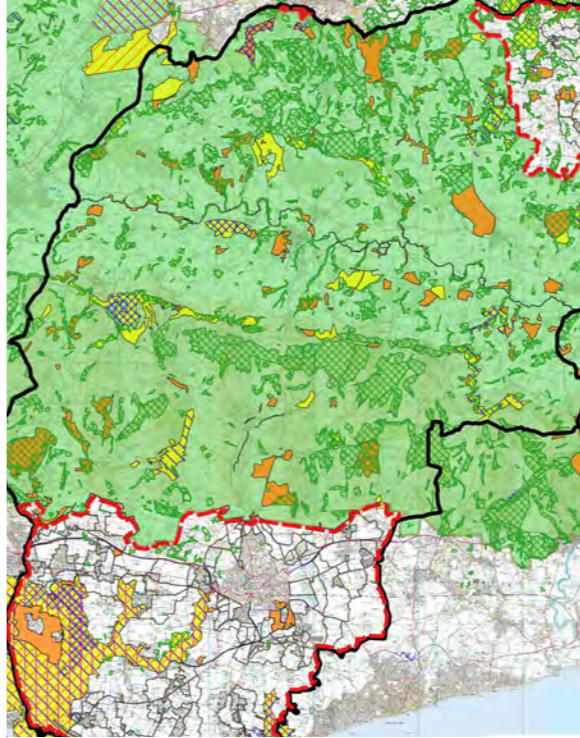
page
Masterplanning **41**



page
Environmental
Impact Assessments **45**



page
Landscape Capacity Studies
& Design
Guidance **49**

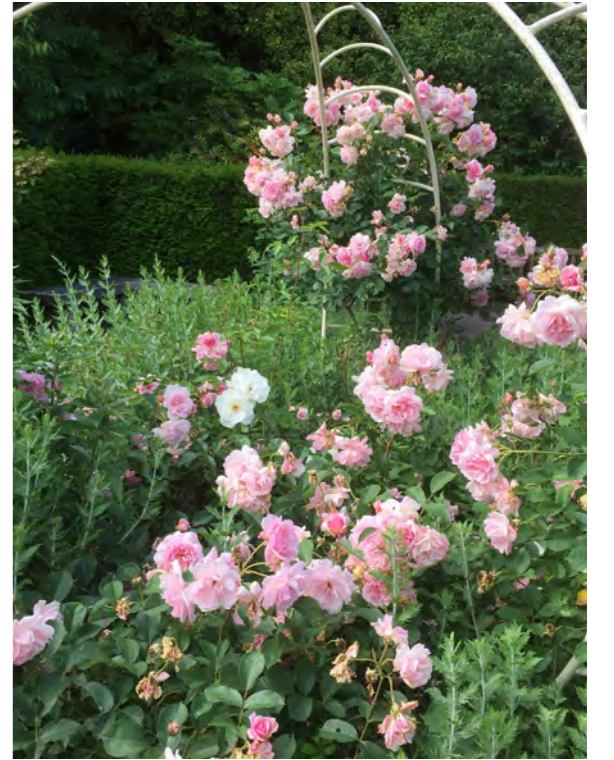


page
South Downs
National Park **53**





Heritage Landscape, Parks & Gardens



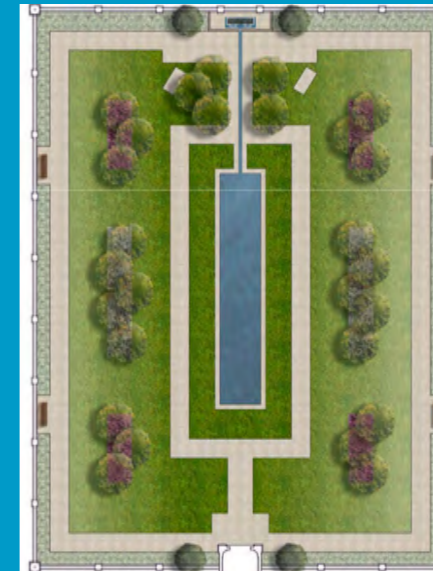


Sutton Hoo National Trust
Woodbridge, Suffolk

RIBA National Award winning scheme for landscape interventions and assessment related to visitor experience upgrades for museum plaza, interpretive routes and viewing tower for this hugely important Anglo Saxon burial site.



Muslim Burial Ground
Horsell Common, Woking



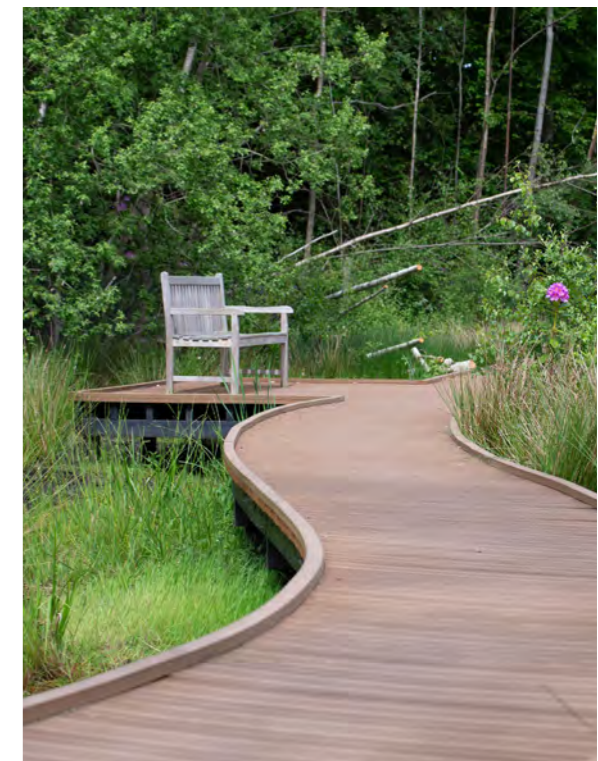
Memorial garden to fallen Muslim soldiers.

A reflective fusion of Islamic traditional garden with Surrey Heath which was subject of a BBC documentary and overall winner of the 2019 Local Government News Urban Green Space Award.



Brookwood Cemetery
Surrey

A land reclamation scheme, processing previously dumped material and re-purposing it as new burial grounds, connected by a boardwalk across tranquil wetlands.





Boksto
Lithuania

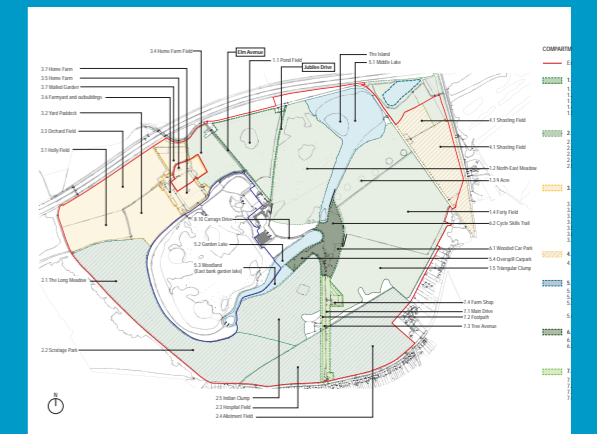
A remarkable urban scheme in the city's old town that re-purposes an historic hospital site for high end residential and office uses along with restaurant and spa. terra firma LT were integral to the design team in modelling and overseeing delivery of the open spaces.



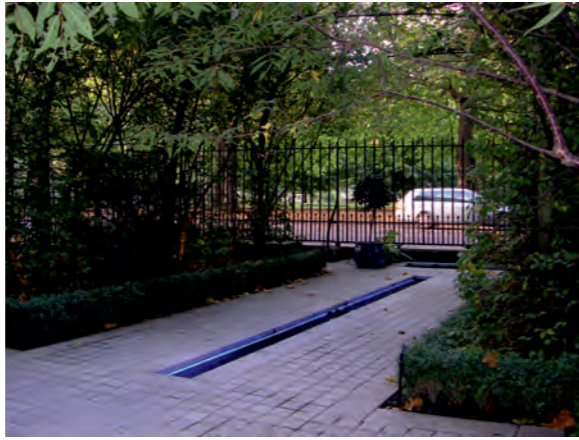
Le Court Leonard Cheshire Memorial Garden
Liss, Hampshire

The final piece of a masterplan to re-purpose the original Cheshire Home is a memorial to its founder designed by terra firma and a Horticulture Week Award nominated garden that remains open to the public

Osterley Park
London



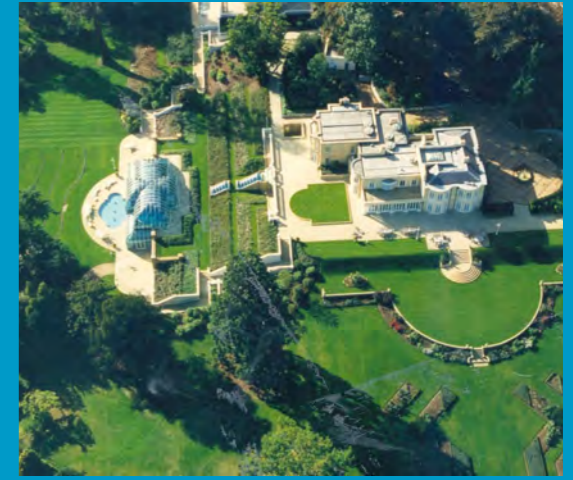
Conservation Management Plan for the National Trust's West London flagship project.



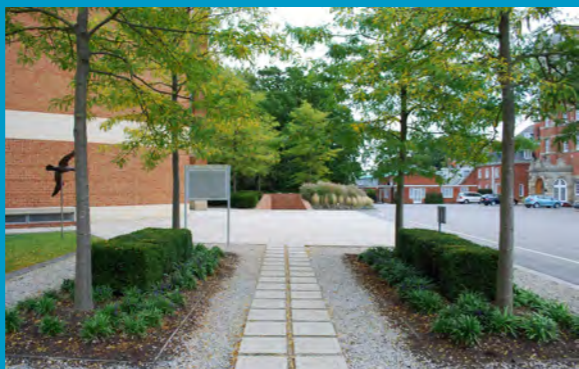
Old Queen Street
London
Private Garden



Creation of an extraordinary parkland gardens within the framework of an historic arboretum.



Tittenhurst Park
Ascot, Berkshire



Falklands Islands Memorial Chapel
Berkshire

Design for the setting and garden of the conflict's prime national memorial.



Panorama Road
Poole
Private Garden



Campden Hill Square
Kensington, London
Private Garden



Dropmore Estate
Buckinghamshire

Conservation Management Plan
and Landscape Masterplanning
for historic estate built by Prime
Minister Lord Grenville and home
to an important pinetum.



Grove Place
Hampshire

Masterplanning historic parkland
for new school premises, along with
replacing of lime avenue

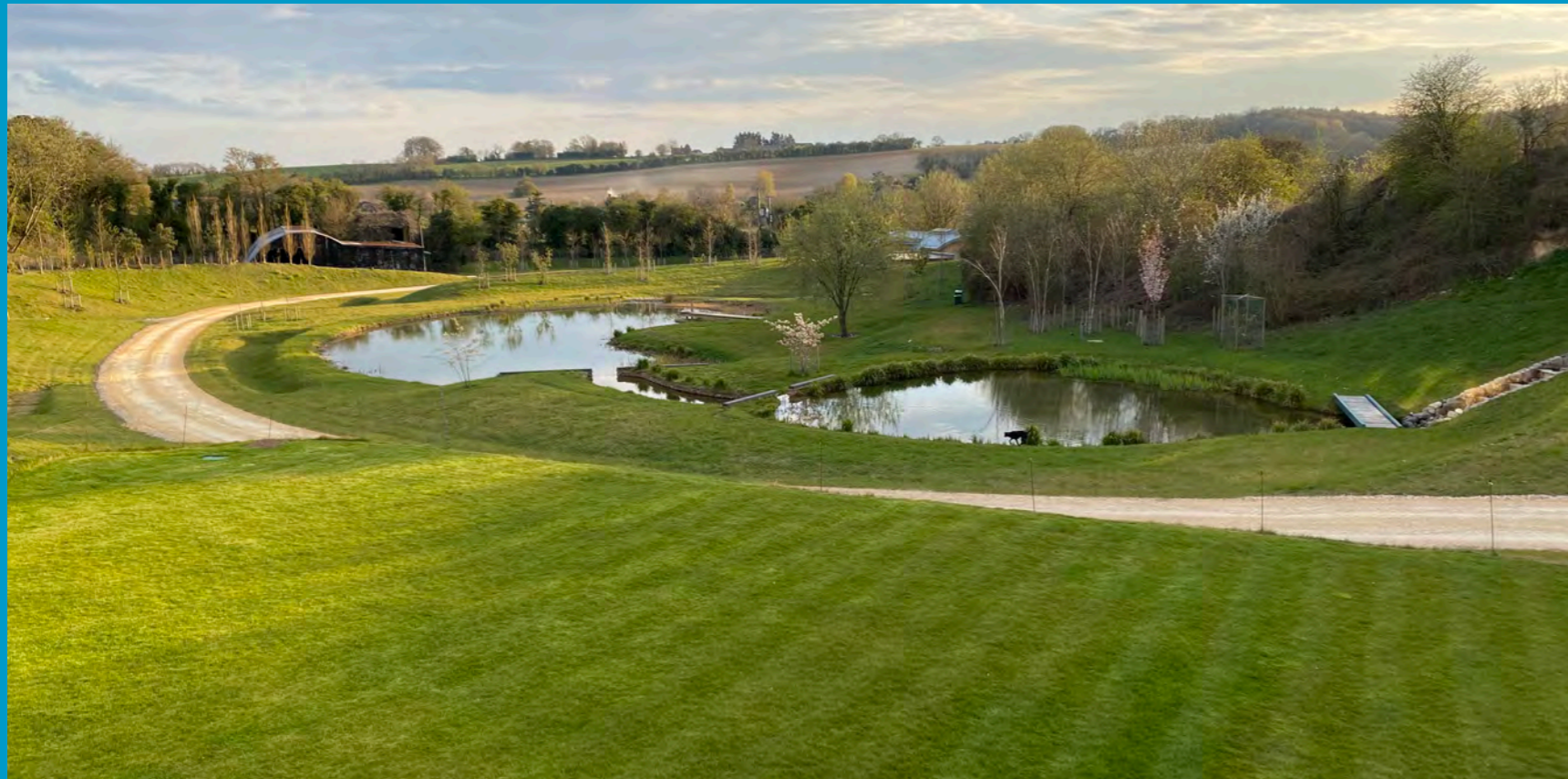


Private Residence
Dulwich Village





Private residence
Renovated chalk quarry
Hampshire



Enviropark
Portsmouth

Millennium Vision for a 21st Century eco-park on
restored tip at gateway to the city.



Heritage landscape, parks and gardens are key elements in the work of a **Landscape Architect** and form a large part of **terra firma's** portfolio.

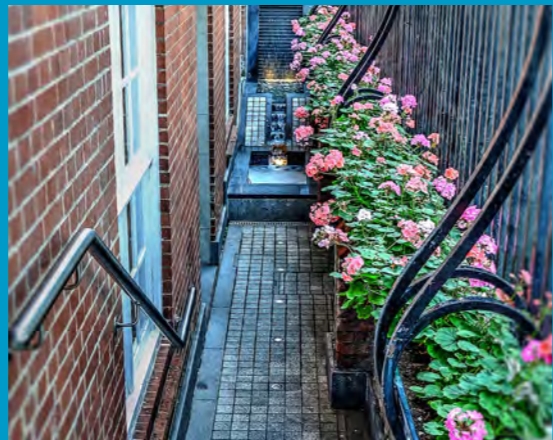


Leisure & Tourism





MAIO Beach Development
Cape Verde



Forbury Hotel's Cerise Restaurant
Reading

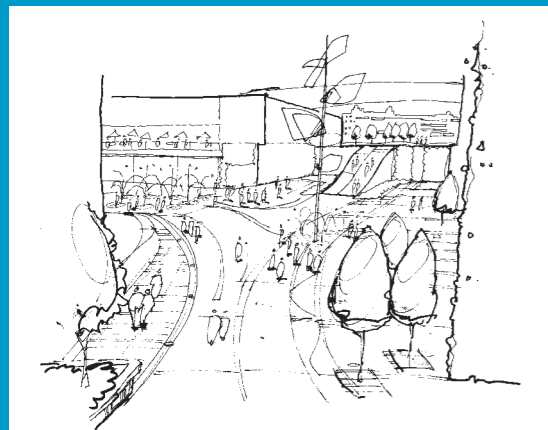


Al Falah New Town
with Alshamsi terra firma and
Alison Hainey
Abu Dhabi



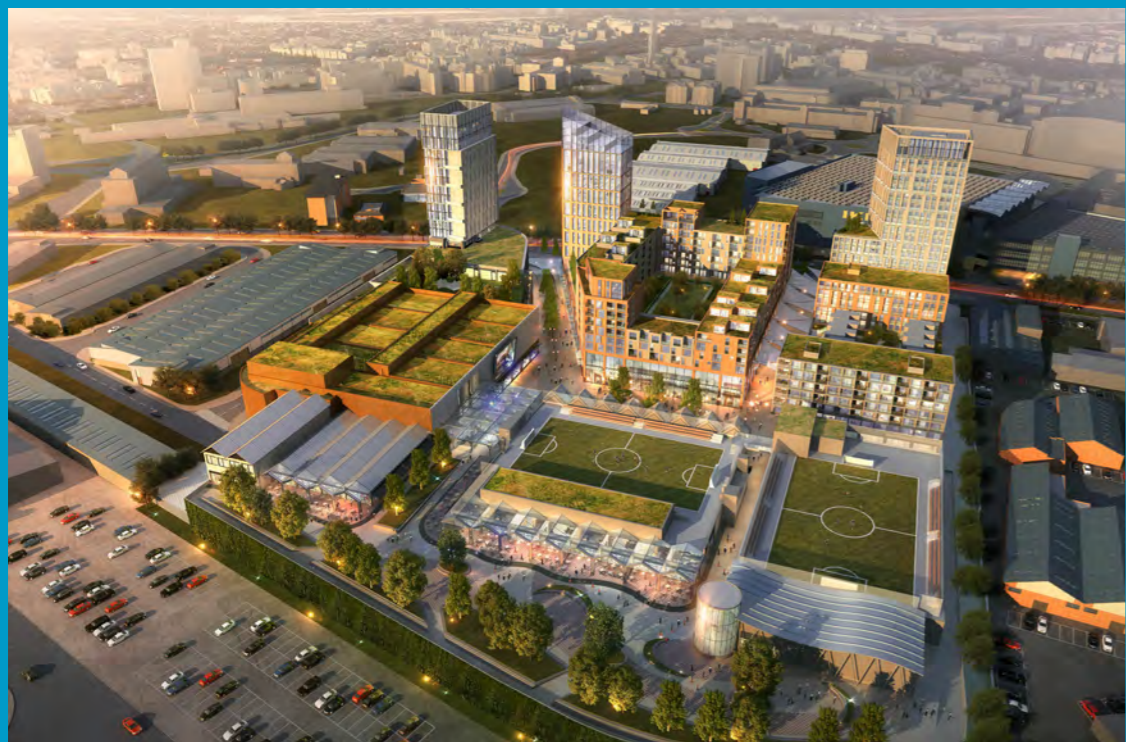


Butlins Spa Hotel Masterplan
Bognor Regis



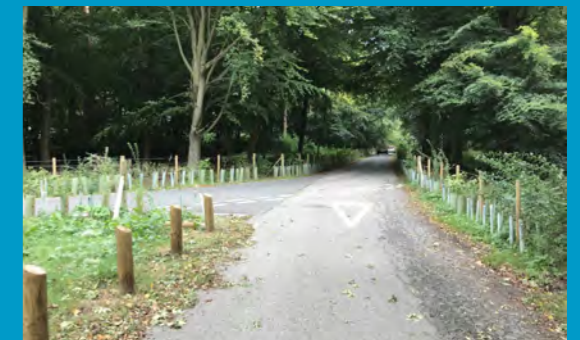
Leisureworld
Southampton

Vision for area regeneration with
Chapman Taylor Architects for
Sovereign Centros.



Wendover Woods
with Forestry Commission
Buckinghamshire

Upgraded access and parking
with associated landscape works
alongside new visitor centre (by
ReFormat architects) for Forestry
England.

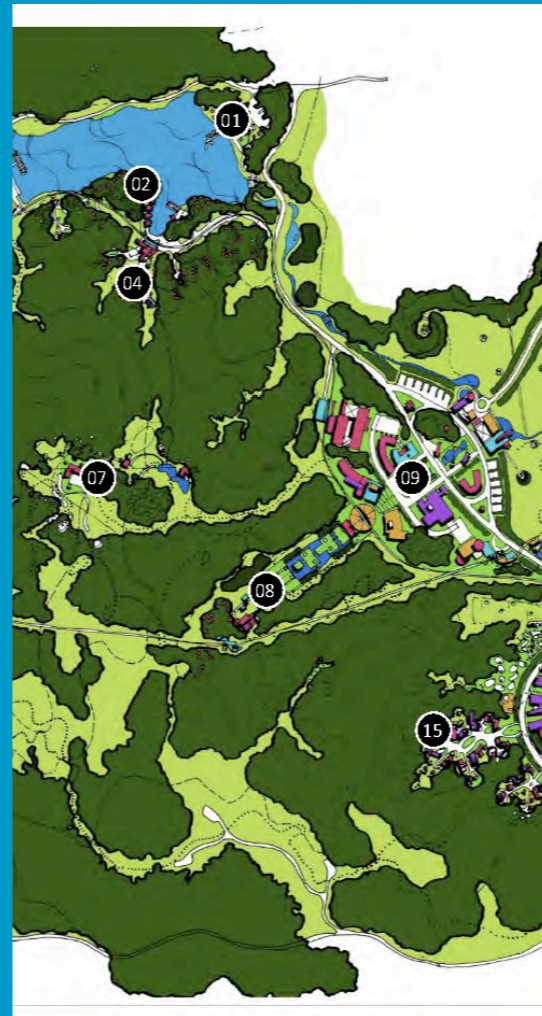


Butterfly World
with Ivan Hicks
Hertfordshire





Boksto
Vilnius



Masterplanning project for extensive mixed use and leisure.



Da Peng Valley
China



Hoe Valley School & Woking Sportsbox
Woking

New secondary school and leisure centre in a Green Belt with extensive sports facilities

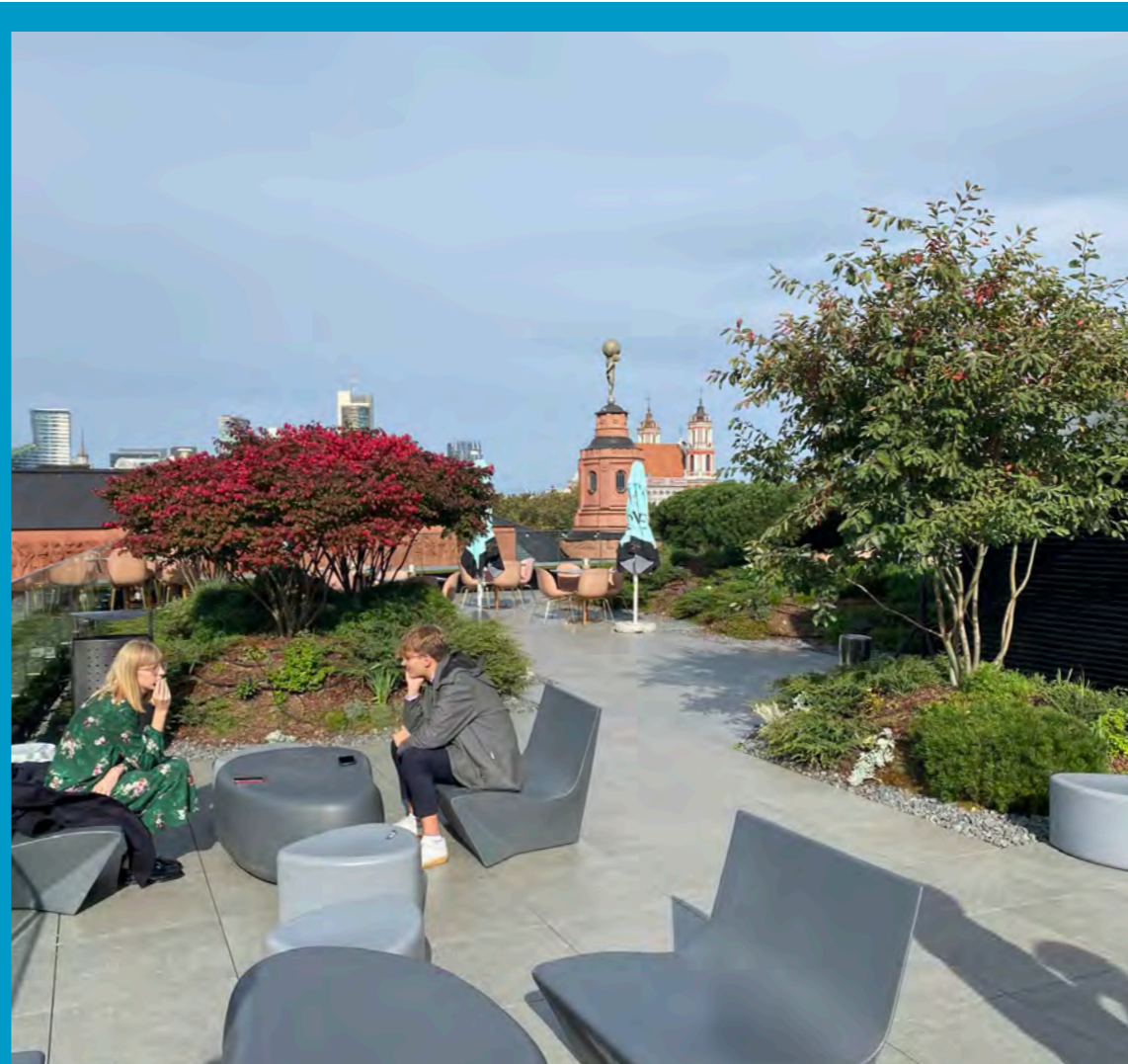


Butser Ancient Farm
Hampshire

Plans for extending this important experimental archaeology and educational site in the heart of the South Downs.

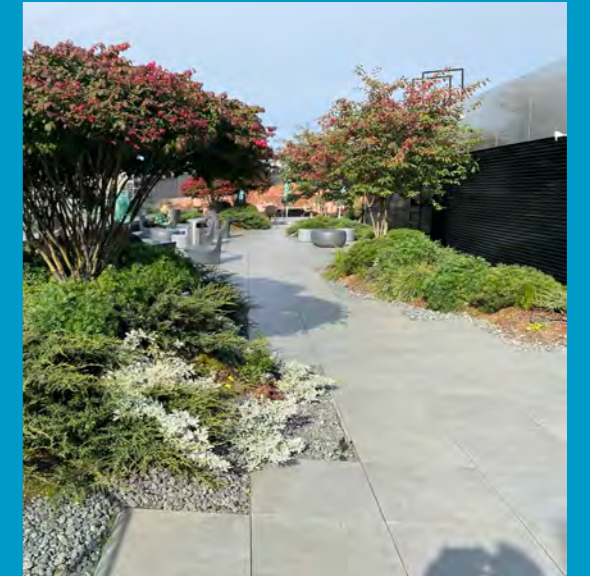


Le meridien Mina Seyahi (W Hotel)
Dubai
Landscape design by TFLA Dubai



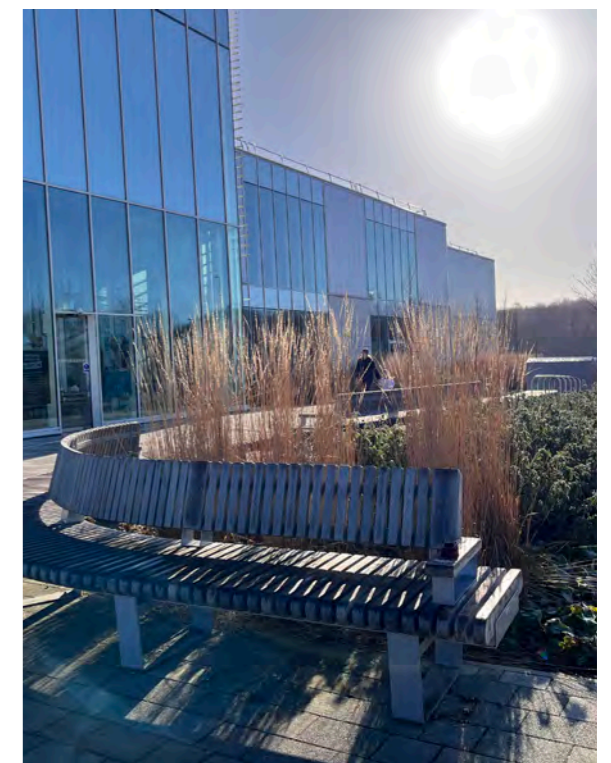
Hilton Roof Garden
Vilnius

terra firma LT designed landscape for new landmark city centre hotel, including public realm and rooftop garden.



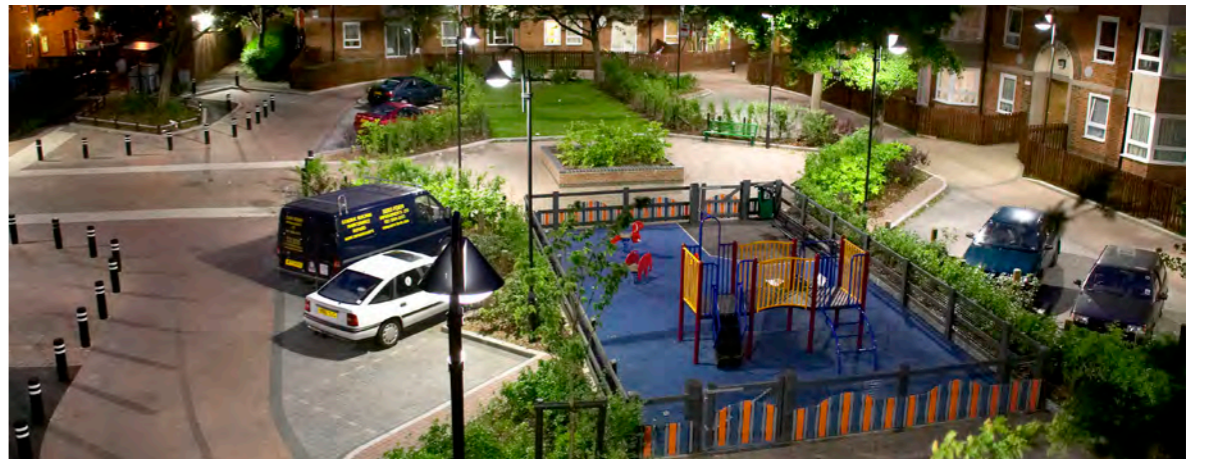
Winchester Leisure Centre
Winchester

Integrated green and blue infrastructure.





Public & Urban Spaces





Petershill
City of London

Series of public open spaces at the foot of St Paul's designed by Lionel Fanshawe while at CFA and completed with input after joining terra firma in 1996.



Lion Square & Dennis Schiama Building
Portsmouth

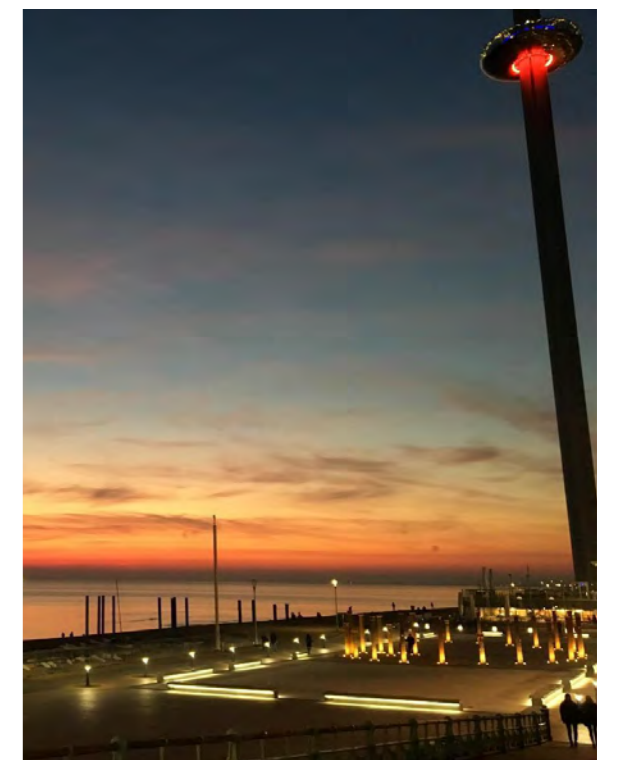


Re-design of public square in tandem with new building for the University of Portsmouth



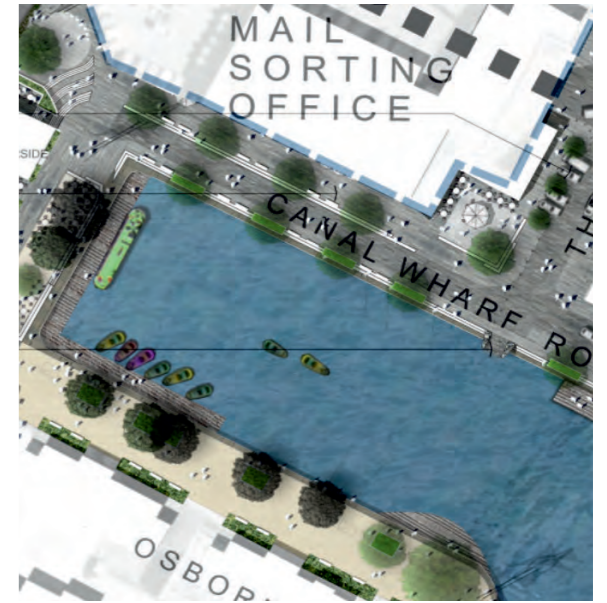
BA i360 Public Realm Plazas
Brighton

Award-winning detailed design of two seafront space either side of the iconic vertical pier





Chichester Canal Basin
West Sussex



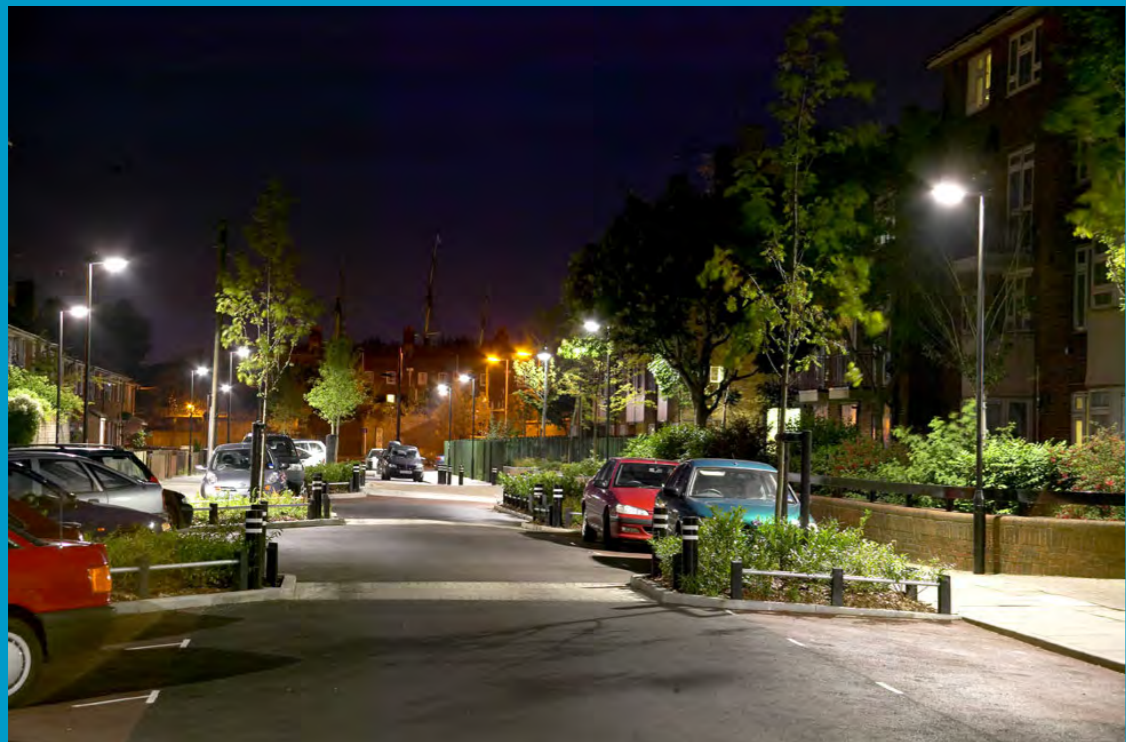
Cumberland Street Homezone
Portsmouth

Award-winning retro fit homezone
for Portsmouth City Council

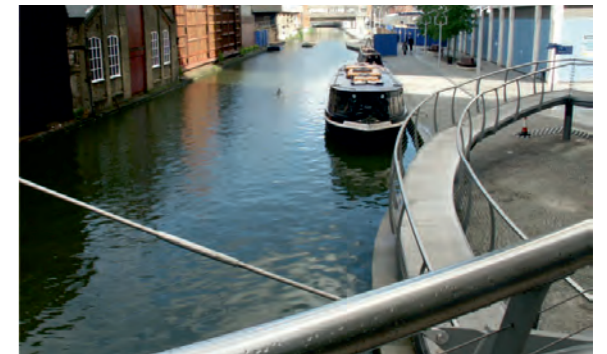


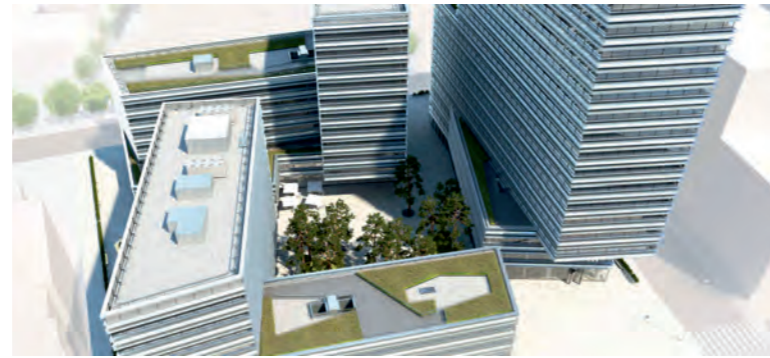
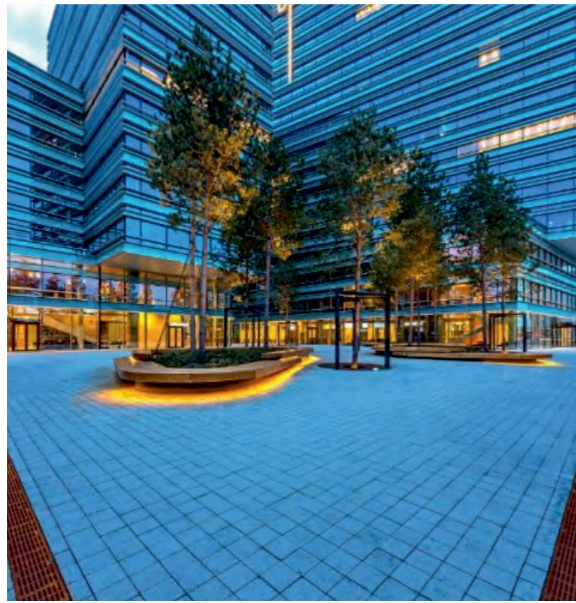
Hohhot Retail
with Alison Hainey
Inner Mongolia, China

Retail project in northern China
masterplanned with Alison Hainey
and Geddes architects.



Paddington Canal Basin
London





Quadrum
with terra firma LT
Vilnius, Lithuania



White City Regeneration Area
London Borough of
Hammersmith and Fulham

(with Ramboll UK and
Sisk Contractors)
Public plaza and new pedestrian
bridge at the entrance to a major
redevelopment in the heart of West
London.



Harwich Navyard
Essex

Mixed used development
application for re-purposing of
historic shipyard area with Gaunt
Francis Architects.



Manarat Al Saadiyat
with Alshamsi terra firma
UAE

Cultural Centre landscape by
Alshamsi terra firma alongside
Aedas Architects.





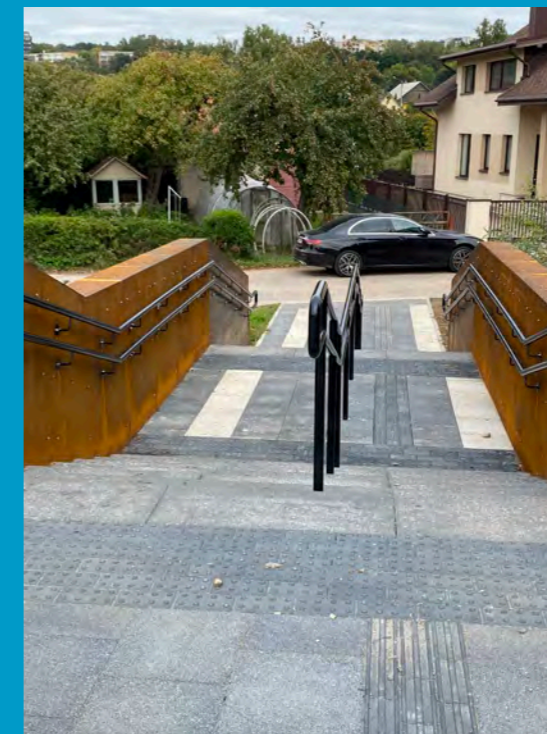
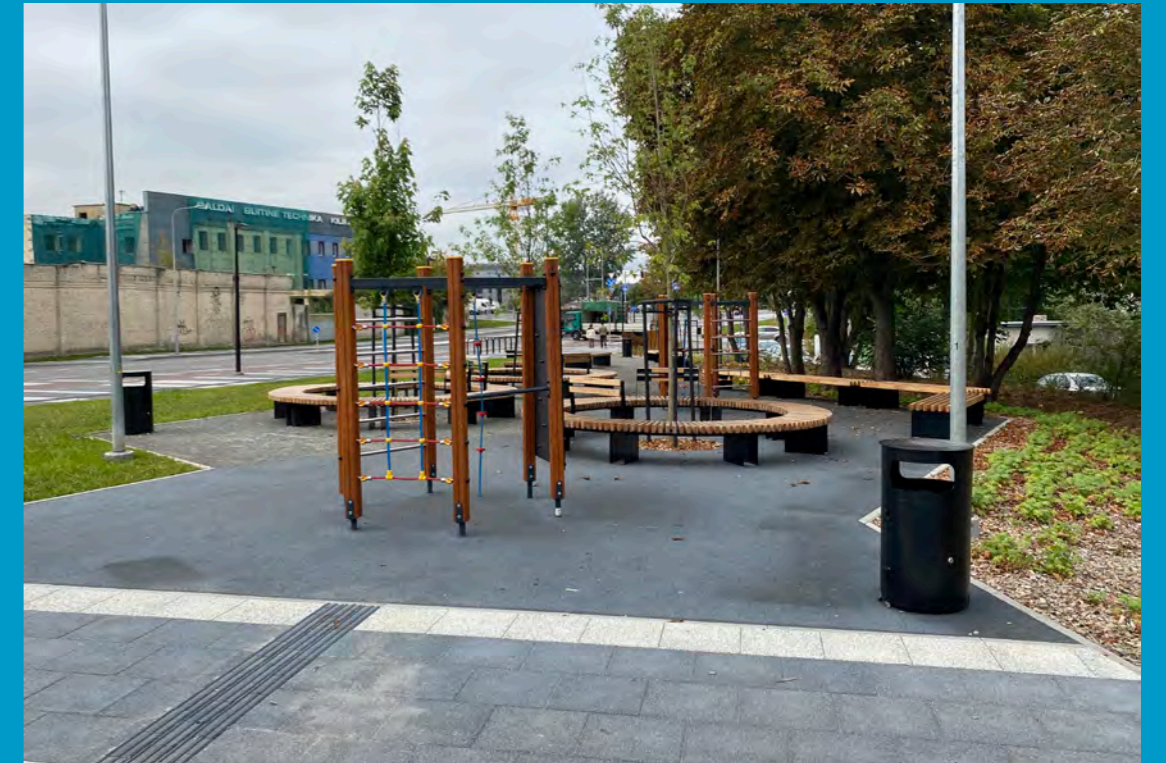
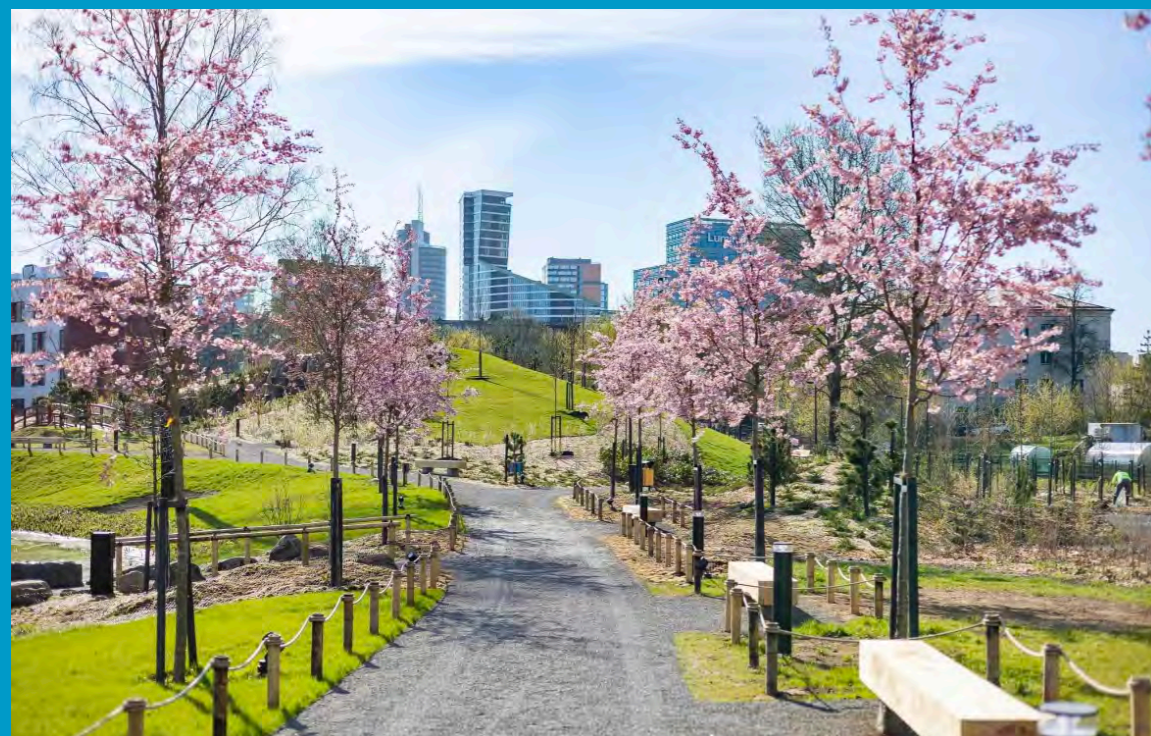
Vilnia Slopes
Vilnius

New housing area lanscape by TFLT.



Japanese Garden
Vilnius

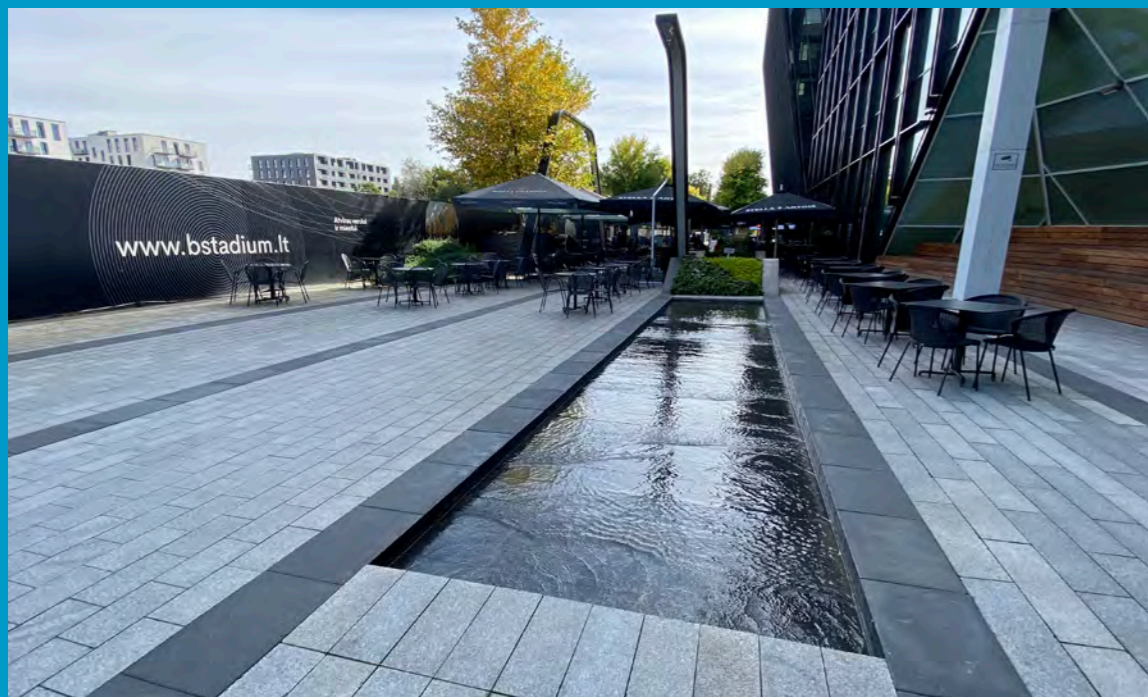
Recently opened public park
designed by TFLT



Sierakausko
Vilnius

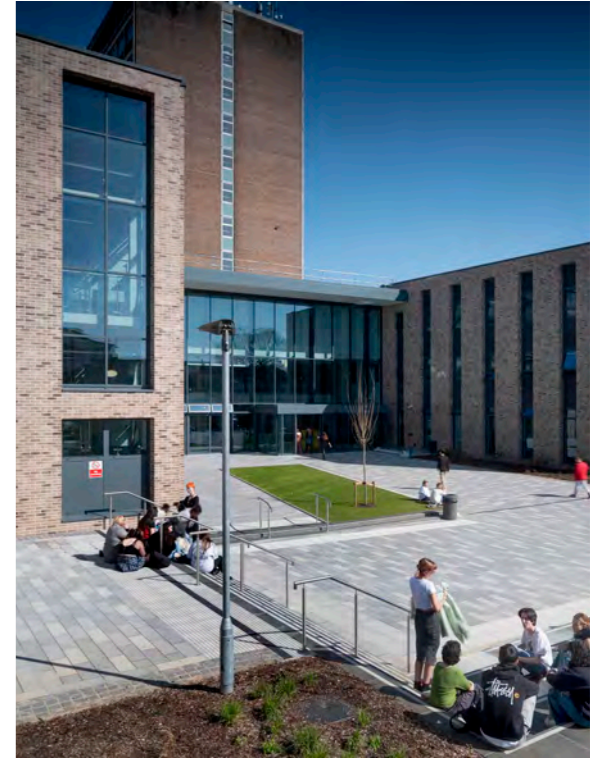
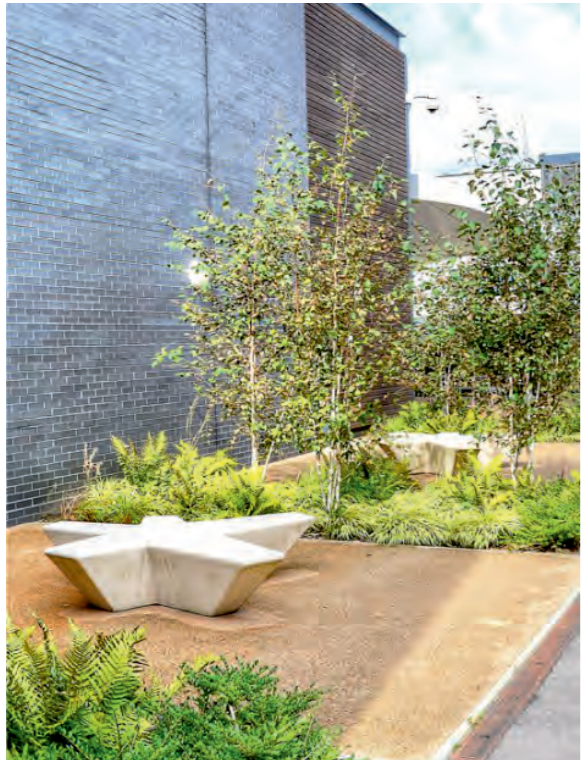
TFLT designed public realm for
new city district.





Vilnius Stadium
Lithuania

TFLT execution of Martha Schwartz
public realm design.



Health & Education



Brockenhurst College STEM Centre
Hampshire

Landscape design for a new student garden and link between the existing sixth form college and the new STEM building.



St Nicholas SEN School
Croydon



Maggie's Centre
(with Kim Wilkie)
Swansea, Wales





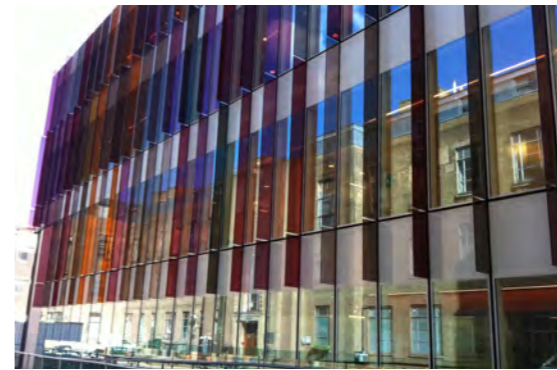
**University of Birmingham
Dubai**

Landscape design by TFLA Dubai



**Oxford University
Biochemistry Building
Oxford**

Landscape Design to curtilage of
iconic new building at centre of
university science area.



**University of Portsmouth
Dental Outreach
Hampshire**

Landscape design to setting of new
building within university campus.



Landscape design for student
areas, sports provision and
parking for a new secondary
school on the former Arborfield
Garrison.



**Bohunt School
Wokingham**





Willicombe Park
Royal Tunbridge Wells
Older persons retirement complex



Barton Peveril Sixth Form College
Eastleigh, Hampshire

A series of courtyard spaces designed by terra firma and completed in 2014, are well used by students and staff alike, with a wide range of seating and gathering opportunities and a covered area for performance, rehearsal and teaching.



Ropemaker's Academy
Hailsham
Award-winning SEN school



Rikkyo School
Horsham



New sports fields for Japanese Boarding school integrated into countryside setting with bold landform modelling and new woodland plantings.





The Austen Academy
Chineham
New SEN school on sloping site

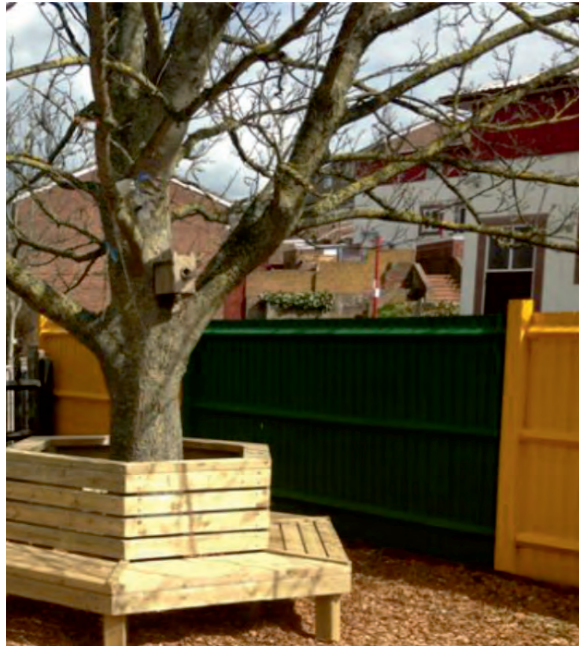


Greater Brighton Metropolitan College
Central Brighton



St Swithun's School
Winchester
New natural turf sports facilities and
new prep school car parking

terra firma has been involved in **health and education** projects at all scales, working with **government, trust, charities, healthcare authorities and private organisations**

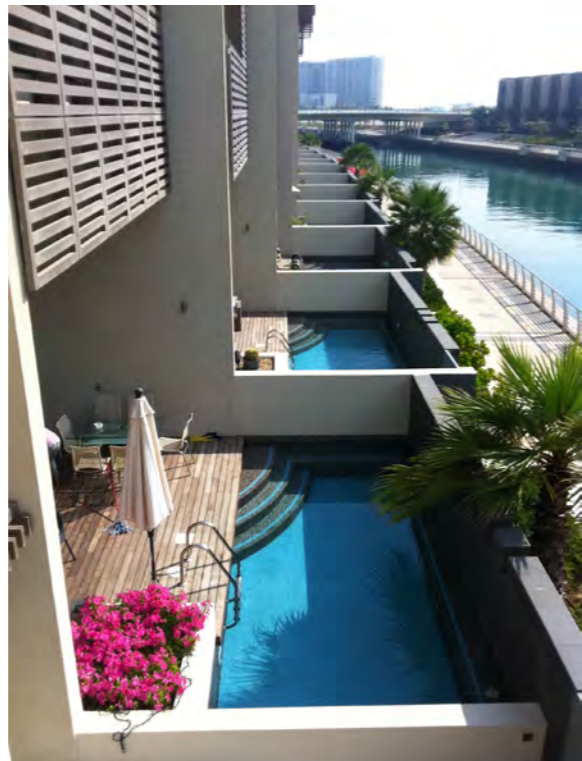
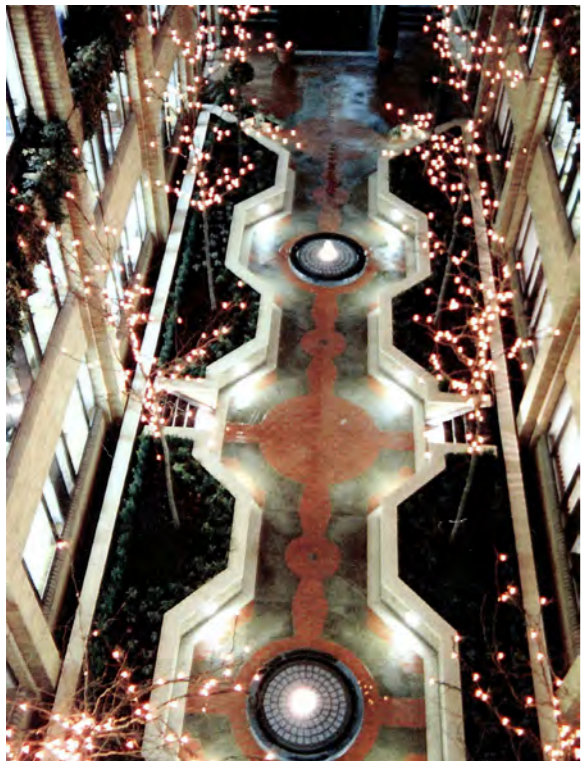


Eastbourne Schools
East Sussex



BHASVIC Sixth Form College
East Sussex





Residential & Community





**St Margaret's
Midhurst**

Early scheme within newly formed South Downs National Park on doorstep of their Headquarters. New housing within old convent school grounds within the town.



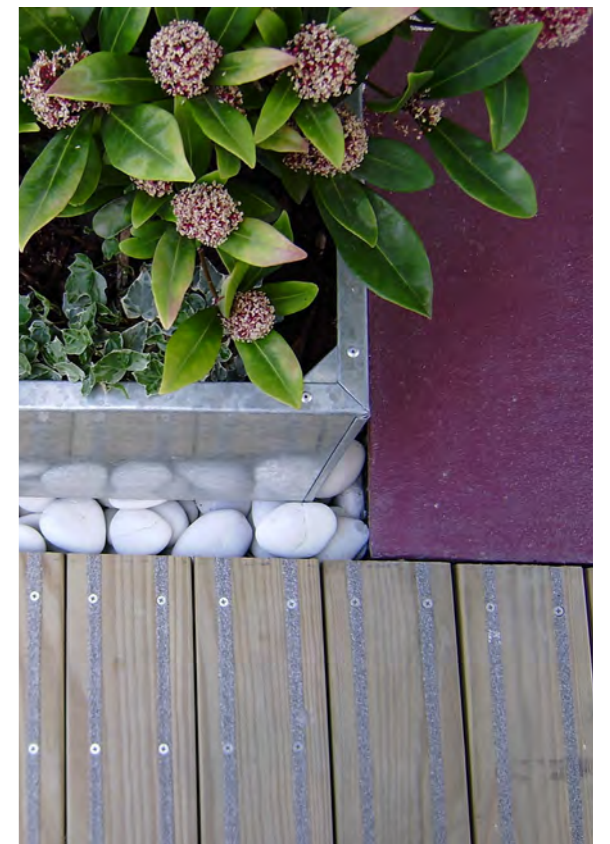
**Sarah Robinson House
Portsmouth, Hampshire**

As part of an area regeneration strategy, terra firma was commissioned to redesign the grounds of this high-rise housing block, working closely with residents to enhance the amenity value and include a new community planting garden, improved streetscape and security, and a range of seating spaces.



**Wallpaper
Islington**

New residential flats within renovated factory with landscape design on multiple floors.





Zekeriyakoy
Istanbul

Dubai office designs for large scale coastal residential settlement negotiating steep topography.



Landscape led masterplan (with EIA LVIA) with Plus Architecture and Savills for the redevelopment of the old Syngenta site for contemporary housing community. Achieved planning 2020 and seen as an exemplar project by the SDNP Authority.



Fernhurst Park
West Sussex



Timberyard Lane
Lewes

Recently recognised in the SDNP Design Awards, this scheme overlooking the River Ouse in Lewes has a contemporary landscape designed by terra firma.





Churchill Retirement Living
Across the UK

terra firma acted as term
consultants on multiple projects
across the south of England.



Landscape architects have a **crucial role** to play in the housing sector, from the earliest stages of siting a development to **detailed design** of hard and soft landscape finishes.



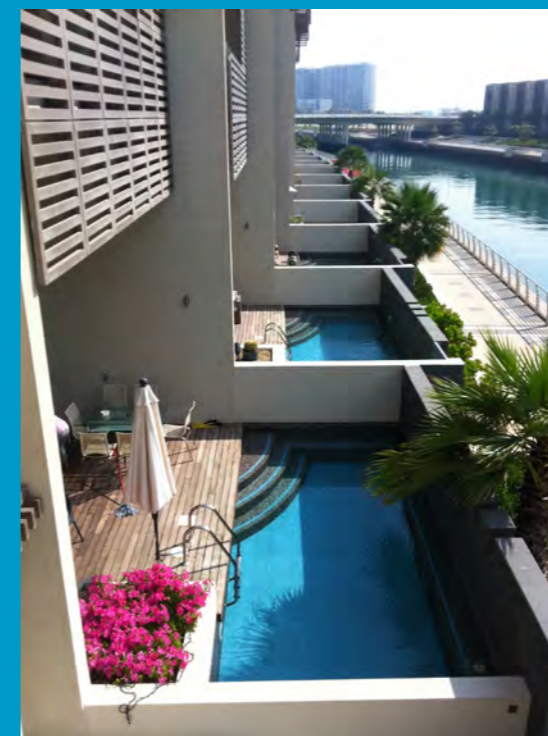
Kelham Gardens
Malborough

New housing scheme for Village Green Homes with green infrastructure and open space.



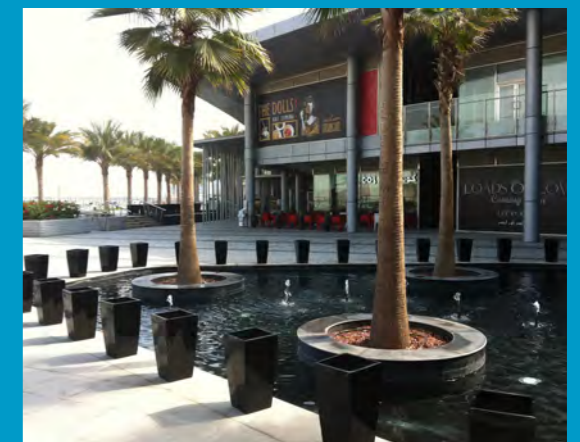
Stoneham, Cemetery Road
Southampton

Hampshire's first zero carbon social housing complete with SUDS measures and productive horticulture area.



Al Muneera
with Alshamsi terra firma
Abu Dhabi

Large scale mixed use waterside development.





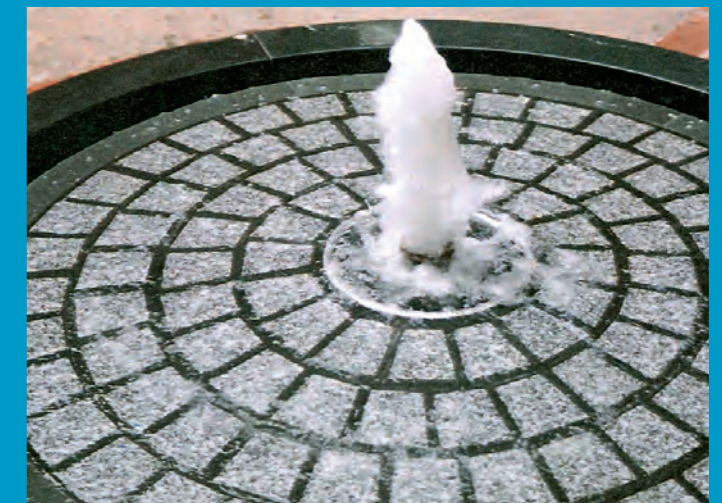
Ayos Tychonas
Cyprus

Low-irrigation landscape for hillside residential development.



Curzon Street
Mayfair, London

Courtyard roof garden for mixed use development.





Corporate, Commercial & Retail





Novartis HQ
Humberside

Upgrade to public realm within science/industrial hub.



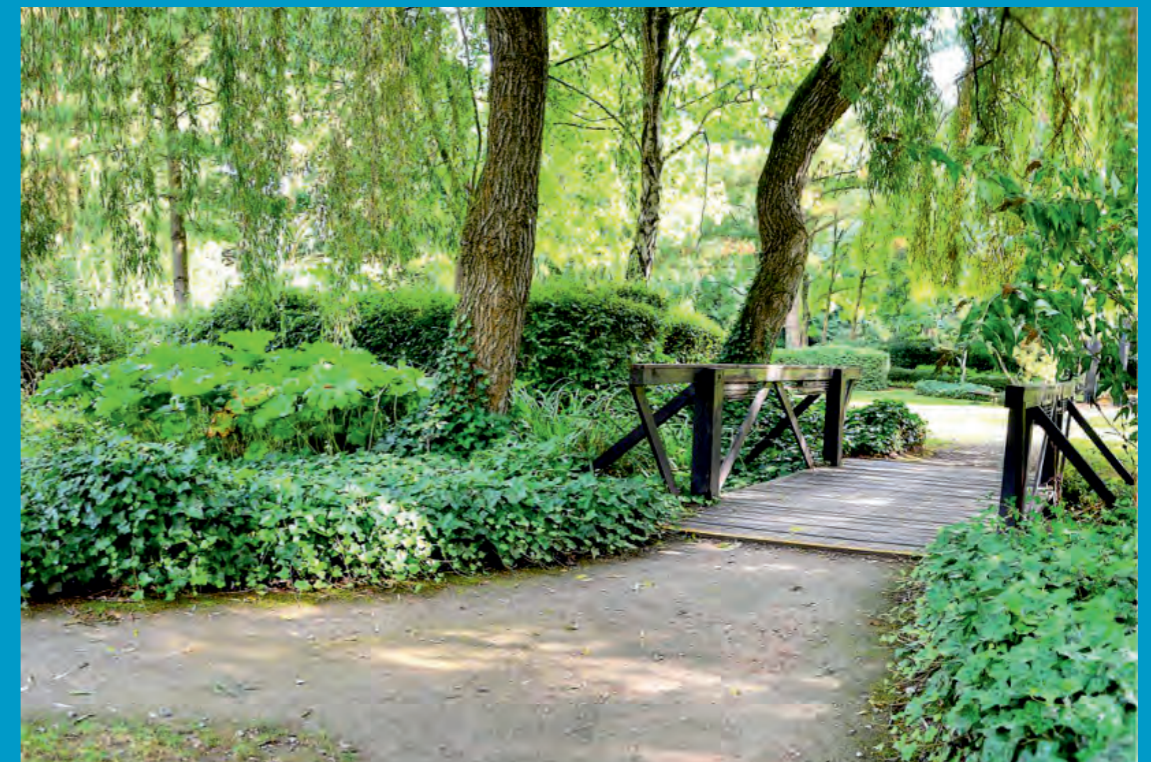
Hampshire Corporate Park
Chandler's Ford

Early award winning terra firma project in the late 1980's based around the US business park model and still an exemplar project a third of a century later.

Chineham Business Park
Basingstoke



Masterplanning and Plot Landscape Design for commercial premises set within new parkland.





HORIBA MIRA
Nuneaton

terra firma were first involved at MIRA in 2009 and ever since have been involved in the masterplanning, EIA and delivery of green infrastructure for this flagship research facility for the UK automobile industry. We are currently underway with design and delivery of the next stage of site wide infrastructure including the central linear park. This has involved long term strategic thinking, client, team, planning authority and community engagement and creating a vision for a connected green infrastructure that can help define the park and make it into a place that is far more than a place of work.



Odney Club
John Lewis Conference Centre
Cookham

Setting of new hub building within parkland including green roof and curved deck.



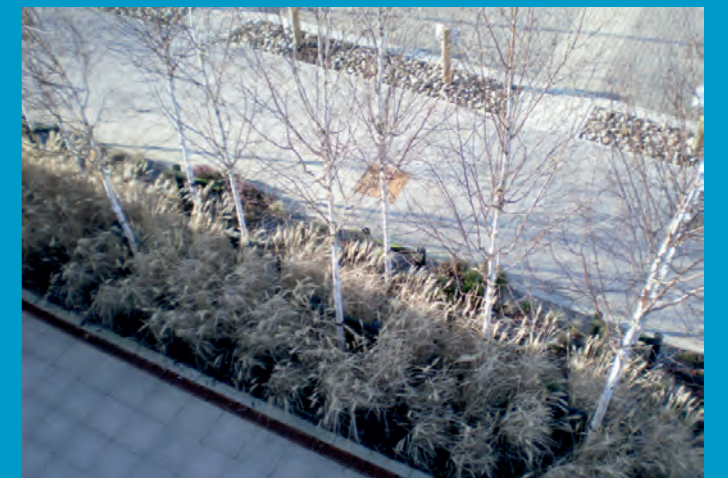


Kingstanding Shopping Centre
Birmingham

Upgrading of retail premises including subconsultant signage and branding.



NATS Prestwick
Scotland



Basepoint
Gosport

Enterprise Centre design



Over the years, terra firma has gained a reputation in the **commerce and industry sectors** for producing **high quality, robust design-led solutions** that have made a **significant, positive impact** for their varied clients.

**Kentish Wine Vault
Hampshire**

Landscape masterplan (with LVIA) with Foster and Partners for the creation of an exemplar sustainable winery in the Kent Downs AONB. Sleek, seamless design carries through to every detail



**Origin Business Park
Park Royal, London**



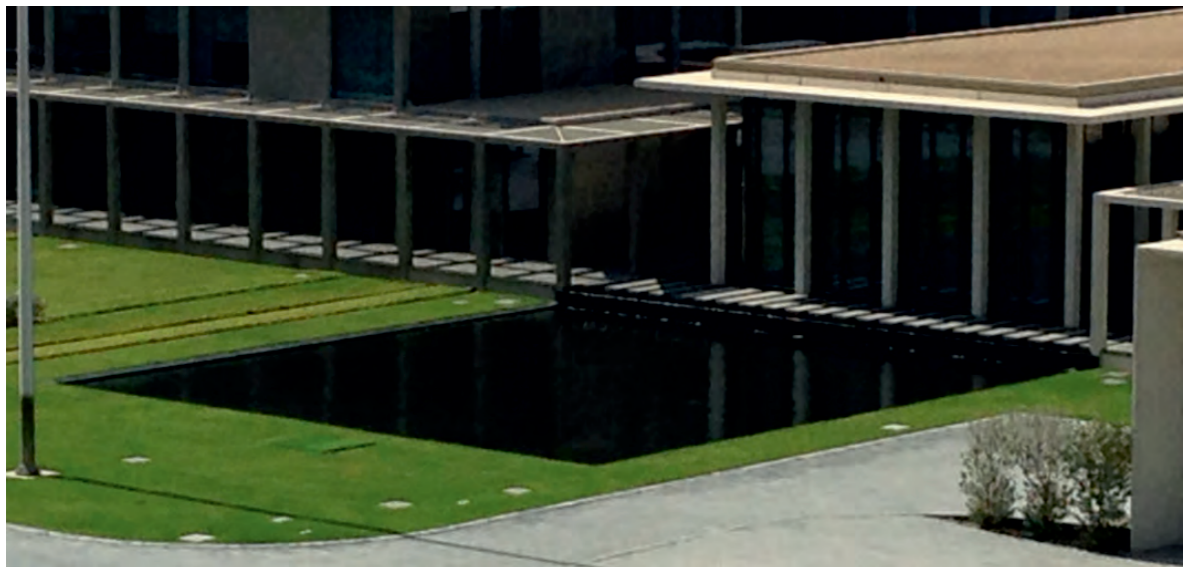
terra firma has worked on over a dozen projects for the biggest developers of UK industrial parks including; the old Guinness Brewery site, Origin at Park Royal (pictured), as well as sites located as far north as Trafford Park in Manchester, in the Midlands, along the M40 and M4 corridor and throughout London.



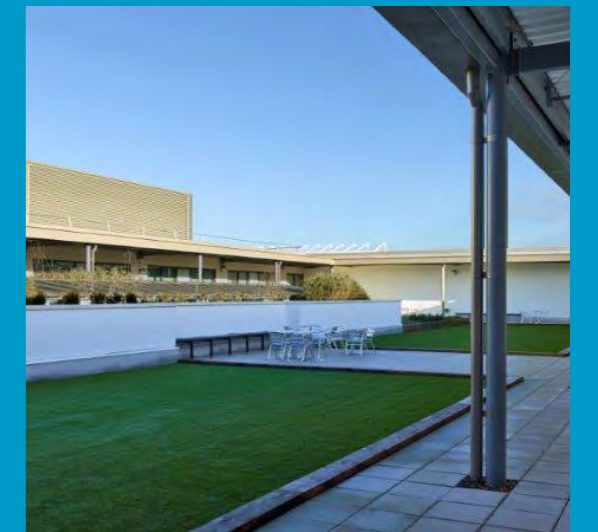


Meraas and EO Offices
Dubai

Headquarters building landscape for Royal Family development company with Hopkins architects.



West Yorkshire Police
Headquarters & Training Facilities
Leeds and Wakefield





Urban Planning Council
with Alshamsi terra firma
Abu Dhabi



Southend FC
Essex



Dunsbury Park
Havant

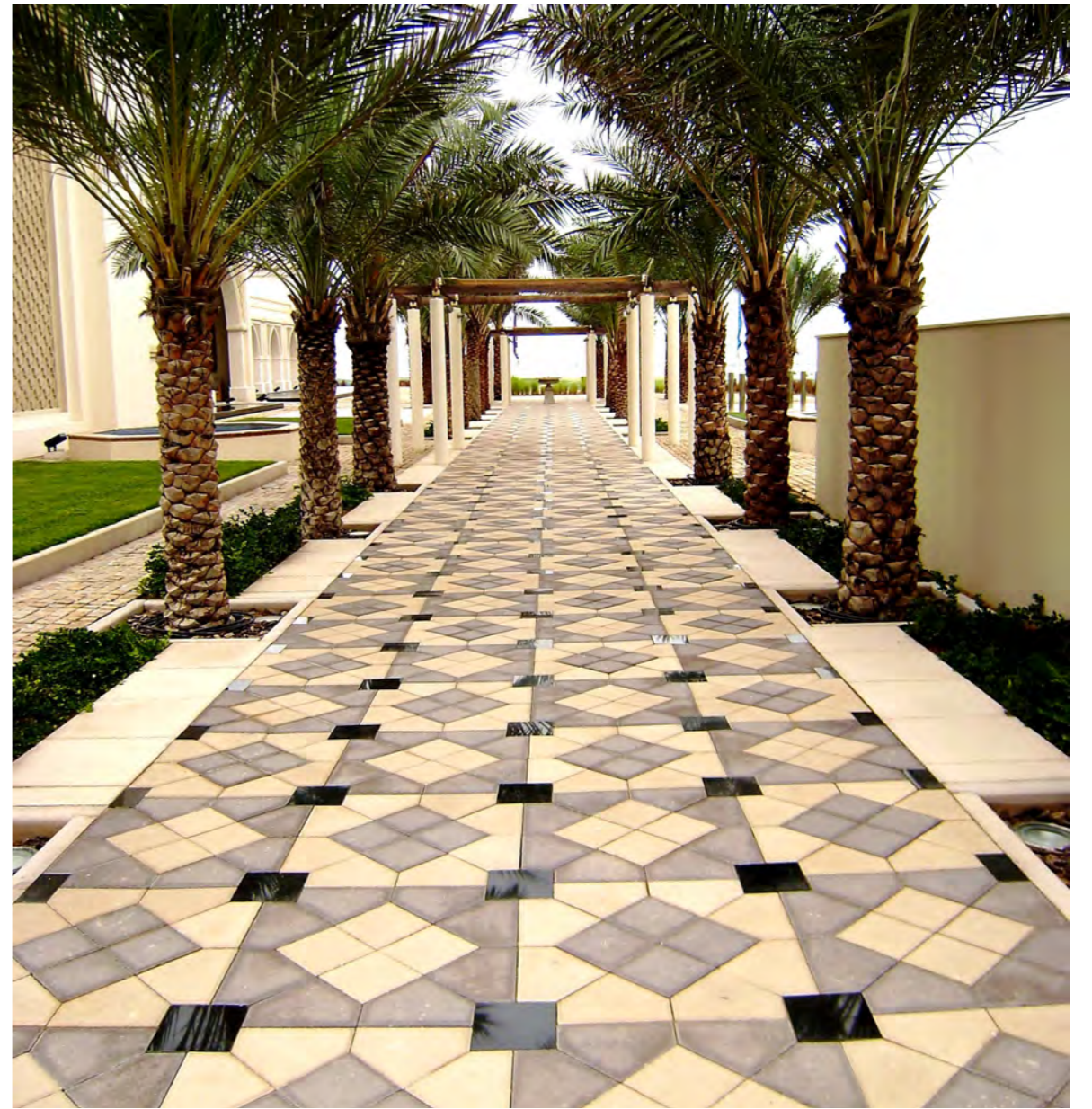
terra firma worked with Peter Brett Associates on the restoration and ecological enhancement of a section of the Hermitage Stream and the landscape for the wider business park.





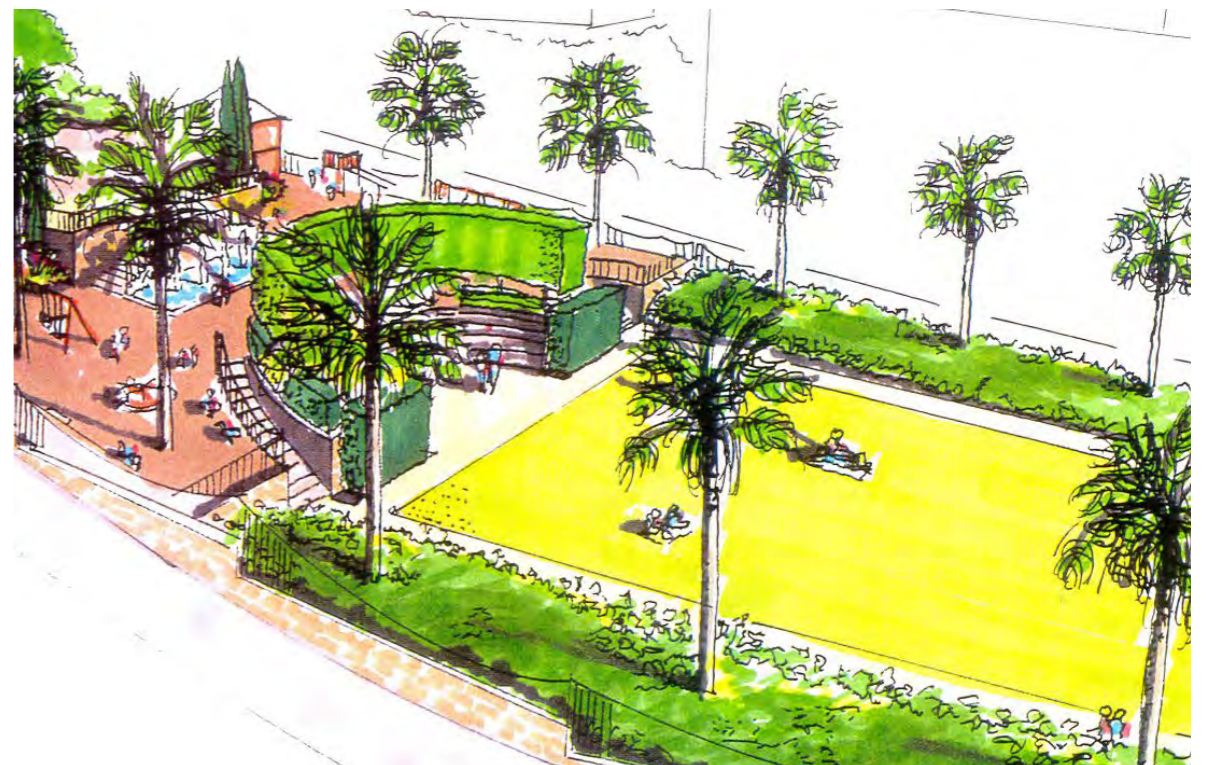
Umm al Quwain Marina
UAE

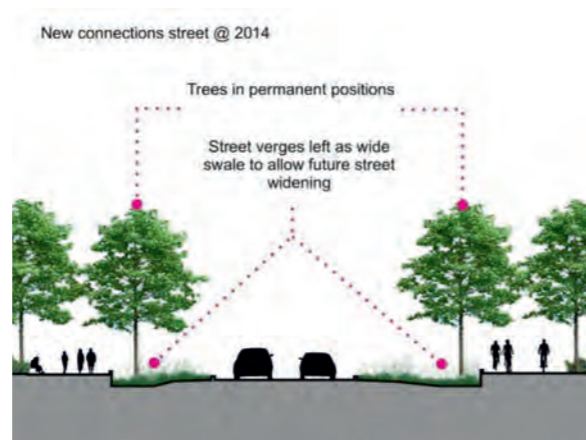
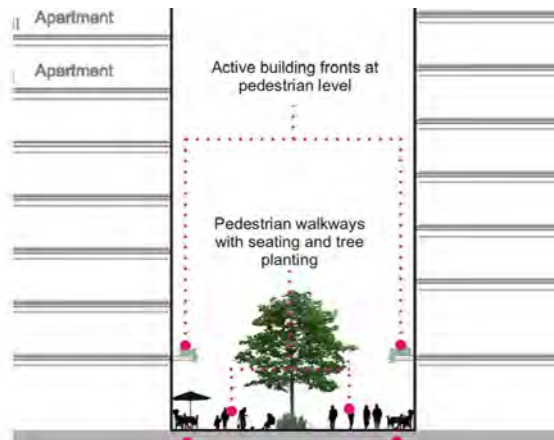
Early Dubai office design for EMAAR
Sales Centre and Development Hub.





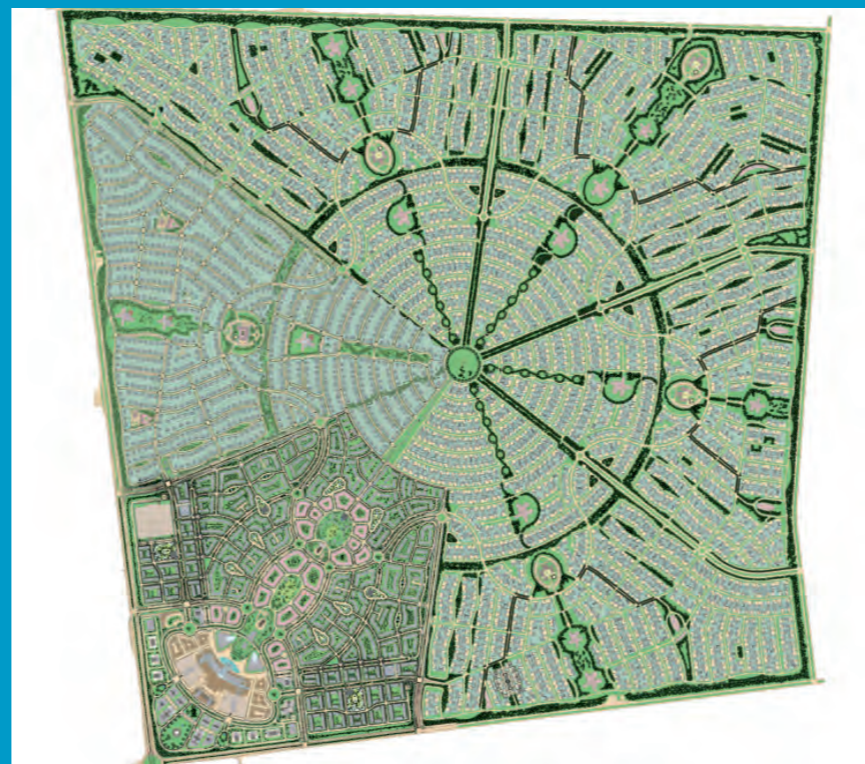
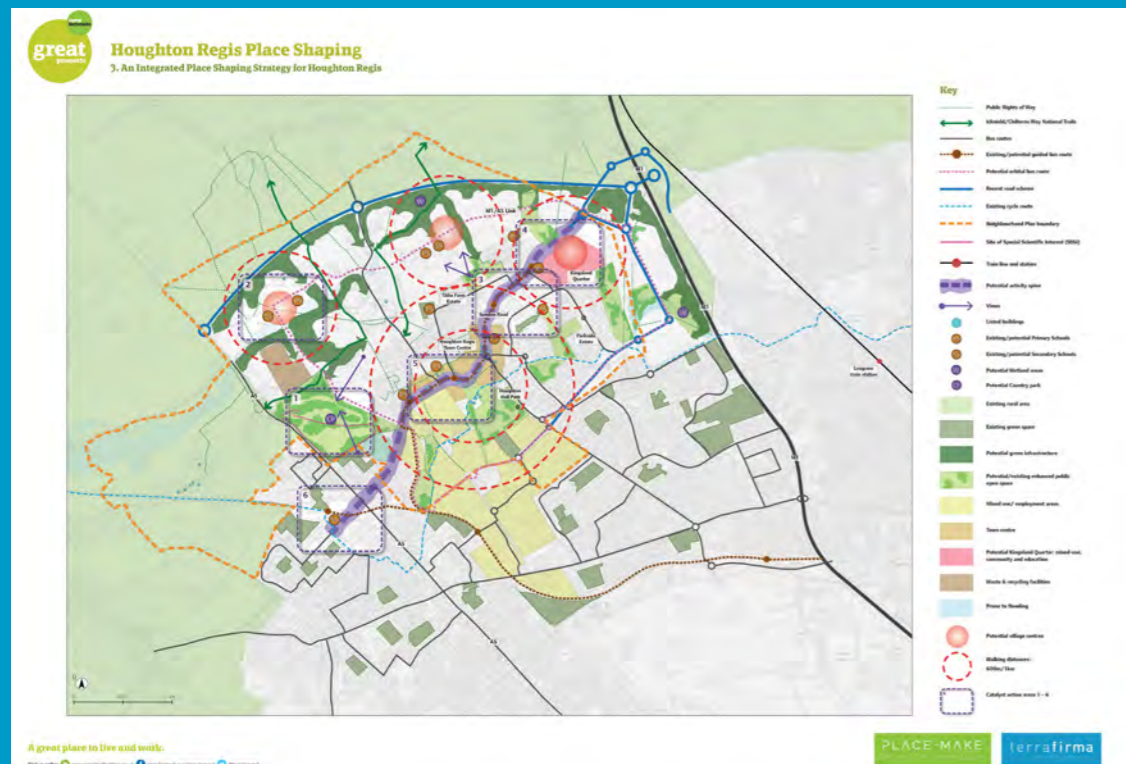
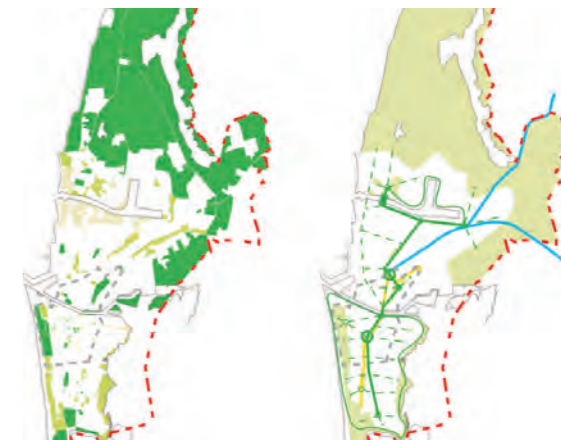
Masterplanning





Hanza City
with Grupa 93
Latvia

Green Infrastructure strategies for new area of the city with Grupa 93.



Houghton Regis Place Shaping
with Place Make
Central Bedfordshire



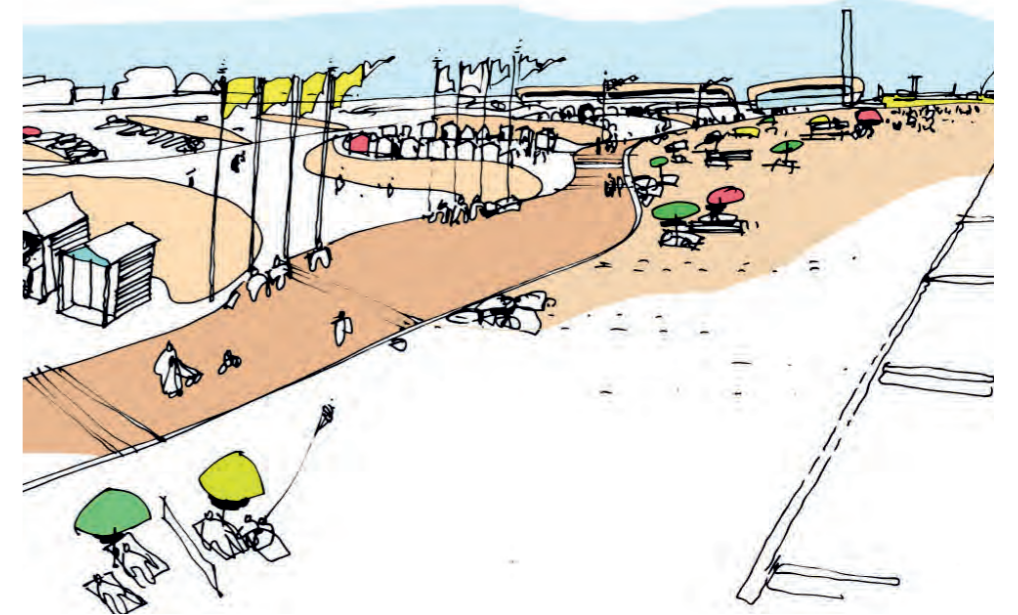
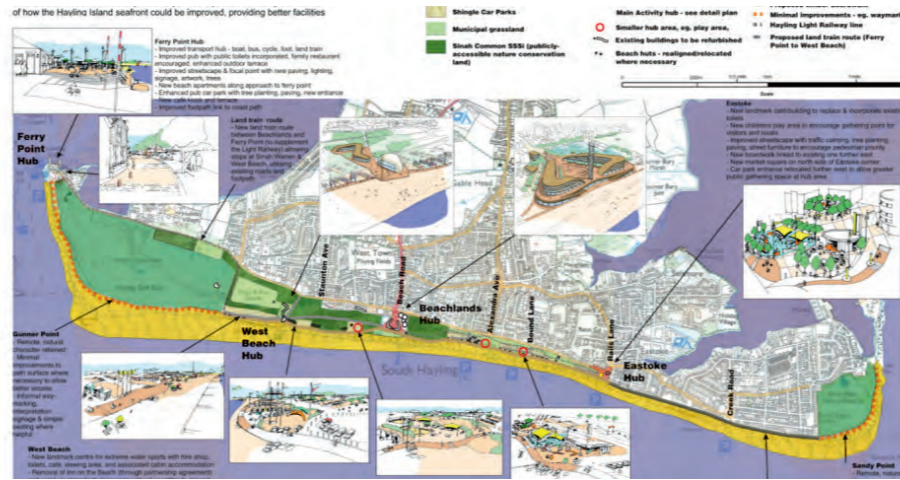
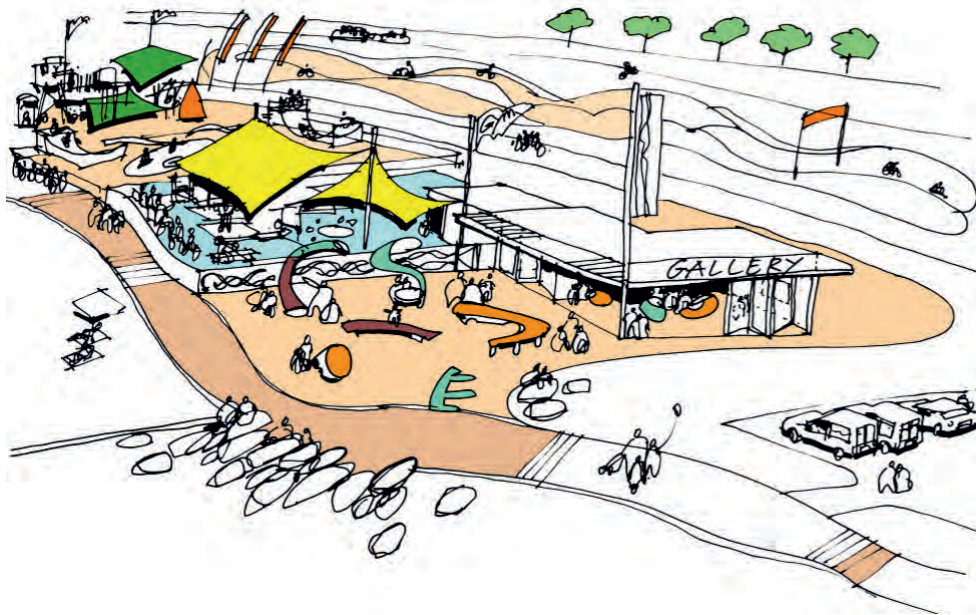
Al Falah New Town
with Alshamsi terra firma
Abu Dhabi

Landscape masterplanning for 80,000 population new town.



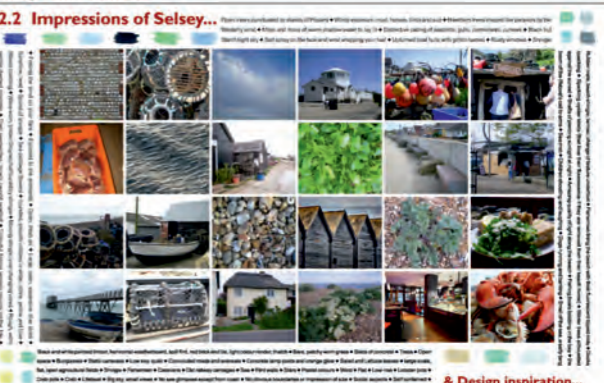
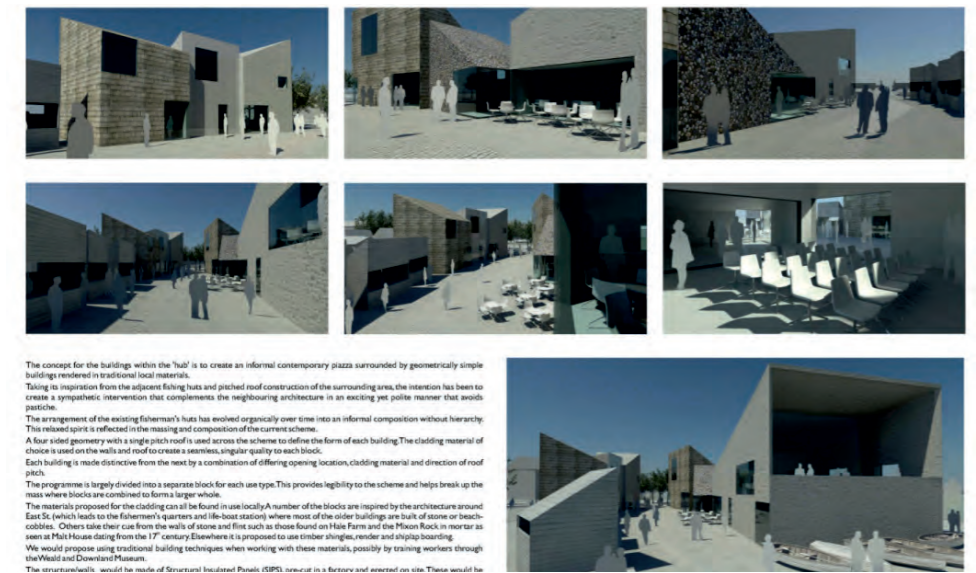
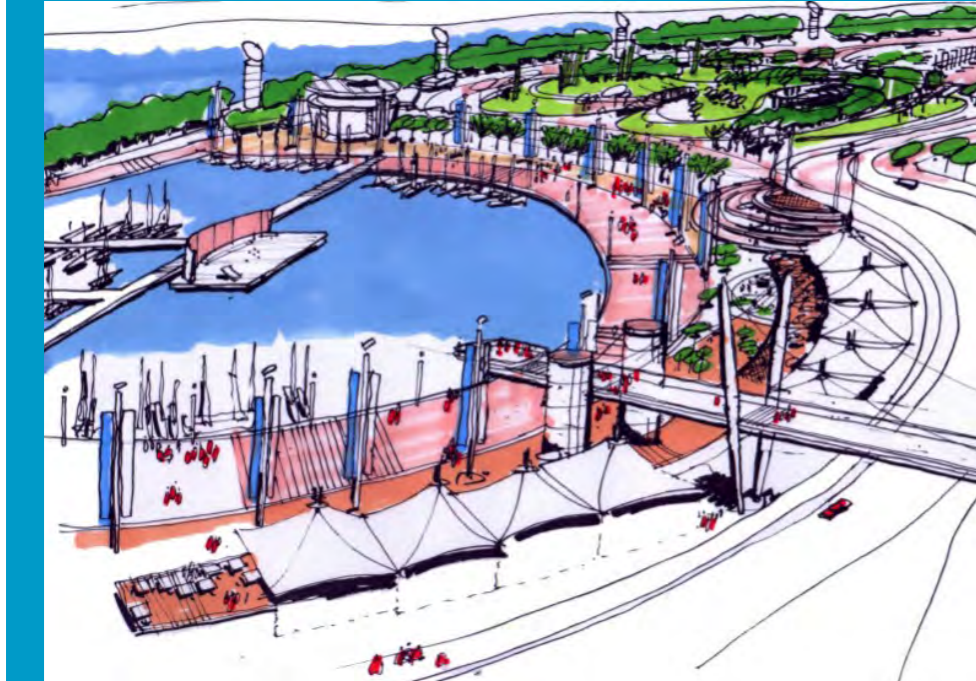
Hayling Island Seafront Hampshire

Seafront regeneration project



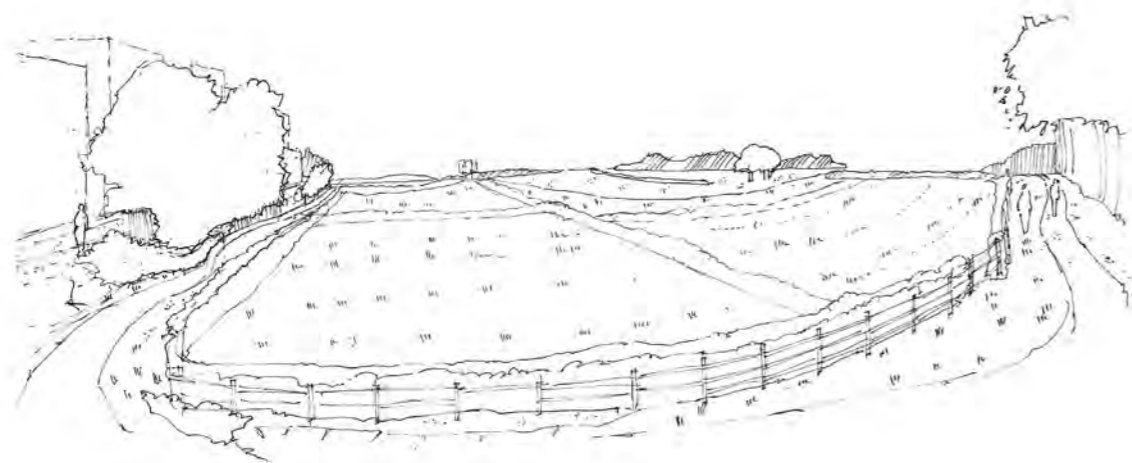
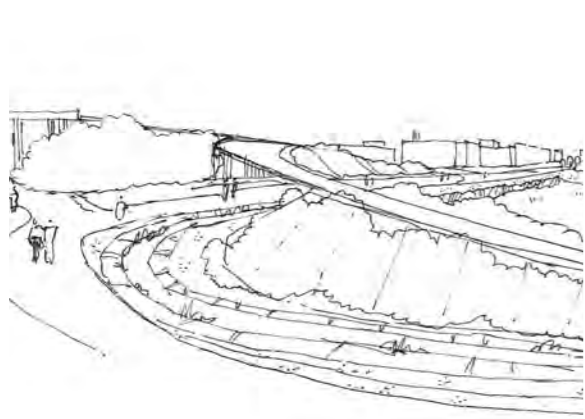
Beirut Waterfront EXPO & Garden Festival Lebanon

Seafront regeneration project



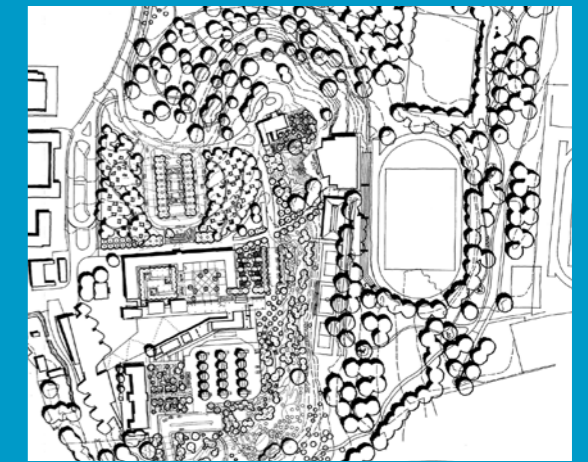
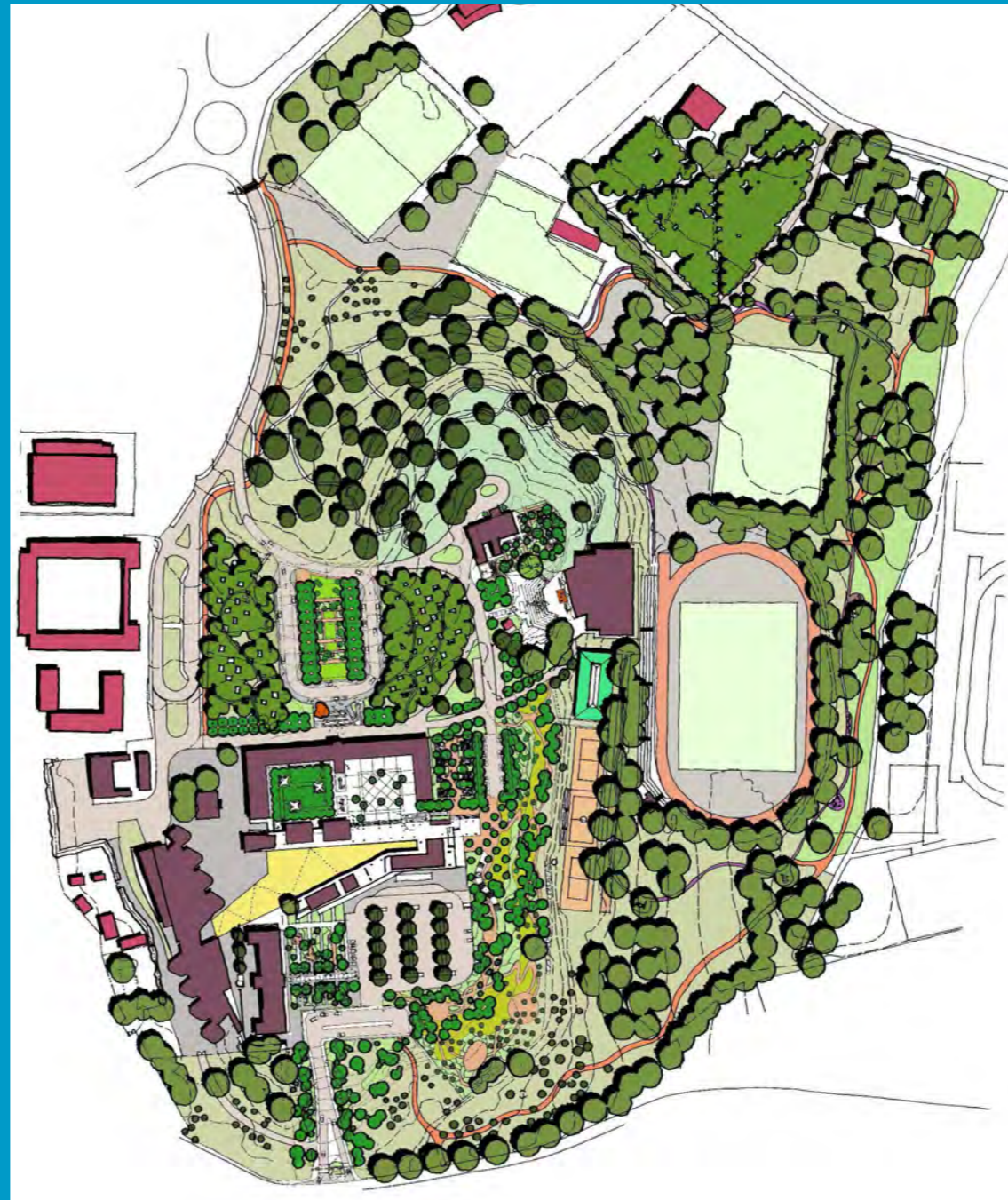
East Beach Seafront Selsey

Seafront regeneration project



Cambridge Biomedical Area
Cambridge

Landscape input into exploration of masterplan for extension area with Allies Morrison and Hawkins Brown.



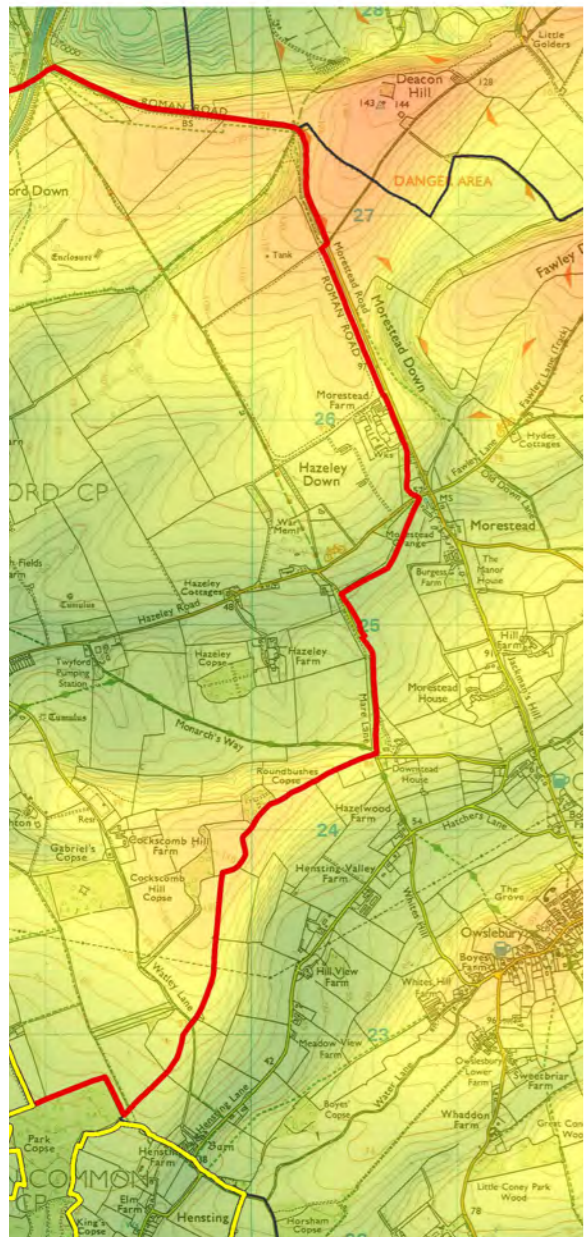
FOUNDED 1900

THE ENGLISH SCHOOL
A SECOND CENTURY OF EXCELLENCE

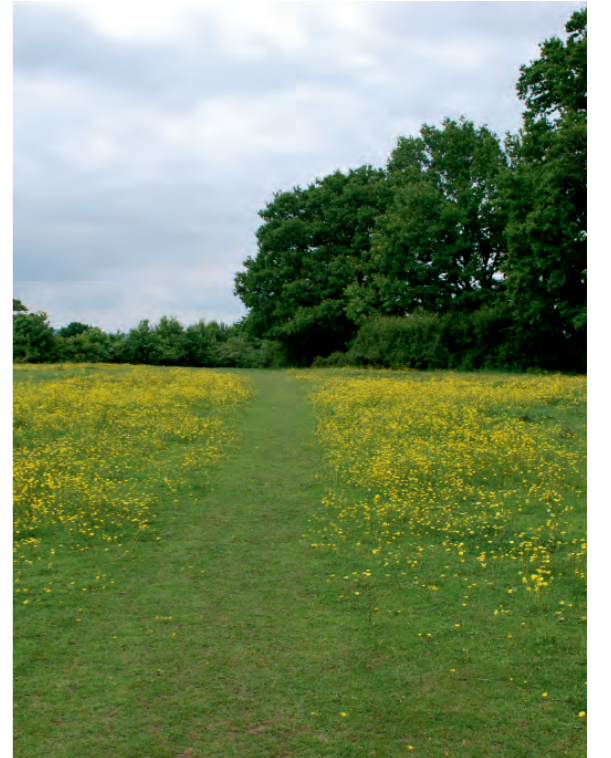
The English School
Nicosia, Cyprus

Masterplan for Cyprus' most prestigious school.





Environmental Impact Assessments



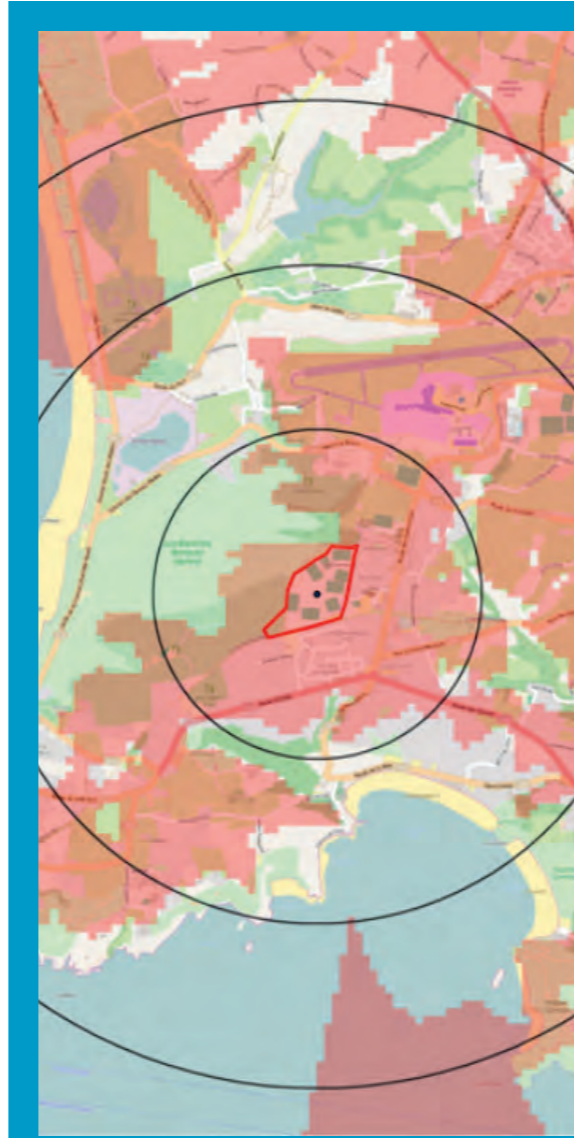
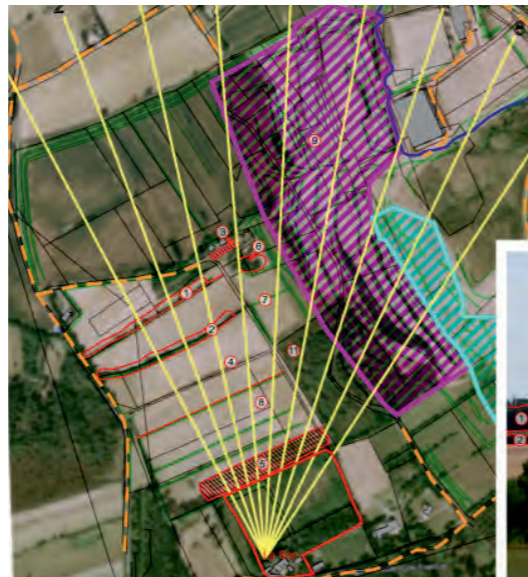
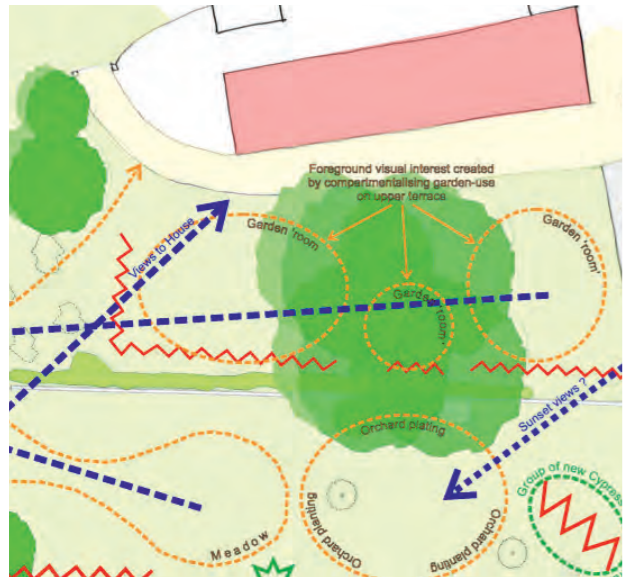
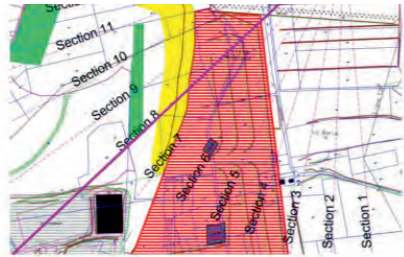
Mining Impacts
St. Papoul

Mining impacts study for private residence at St. Papoul, France

Option for mitigation by Ash wood crescent-shaped bund and planting



Option for mitigation by new bund and planting in Paddock



Les Quennevais School
Jersey



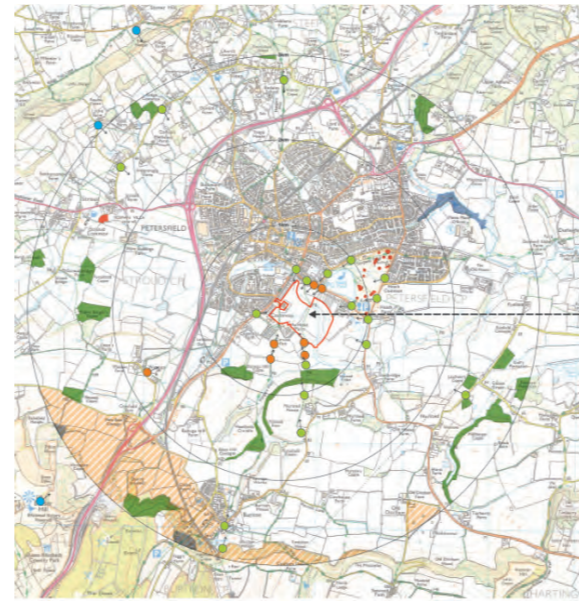
New RNLI Berths
Isle of Man



terra firma is a **Landscape Institute** registered practice, a **Law Society** registered expert witness, a member of the **Urban Design Group** and an **Associate of the Institute of Environmental Management and Assessment**.



Causeway Farm Housing
Petersfield



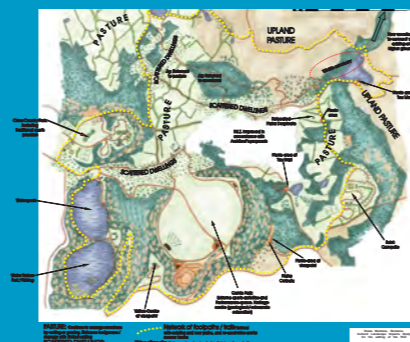
Waste Water Treatment Plant
Europa Point, Gibraltar

EIA for important new infrastructure involving offshore appraisal.



Rosia Montana Goldfields
Romania

EIA and masterplan for landscape regeneration of Europe's largest Open Cast Goldmine

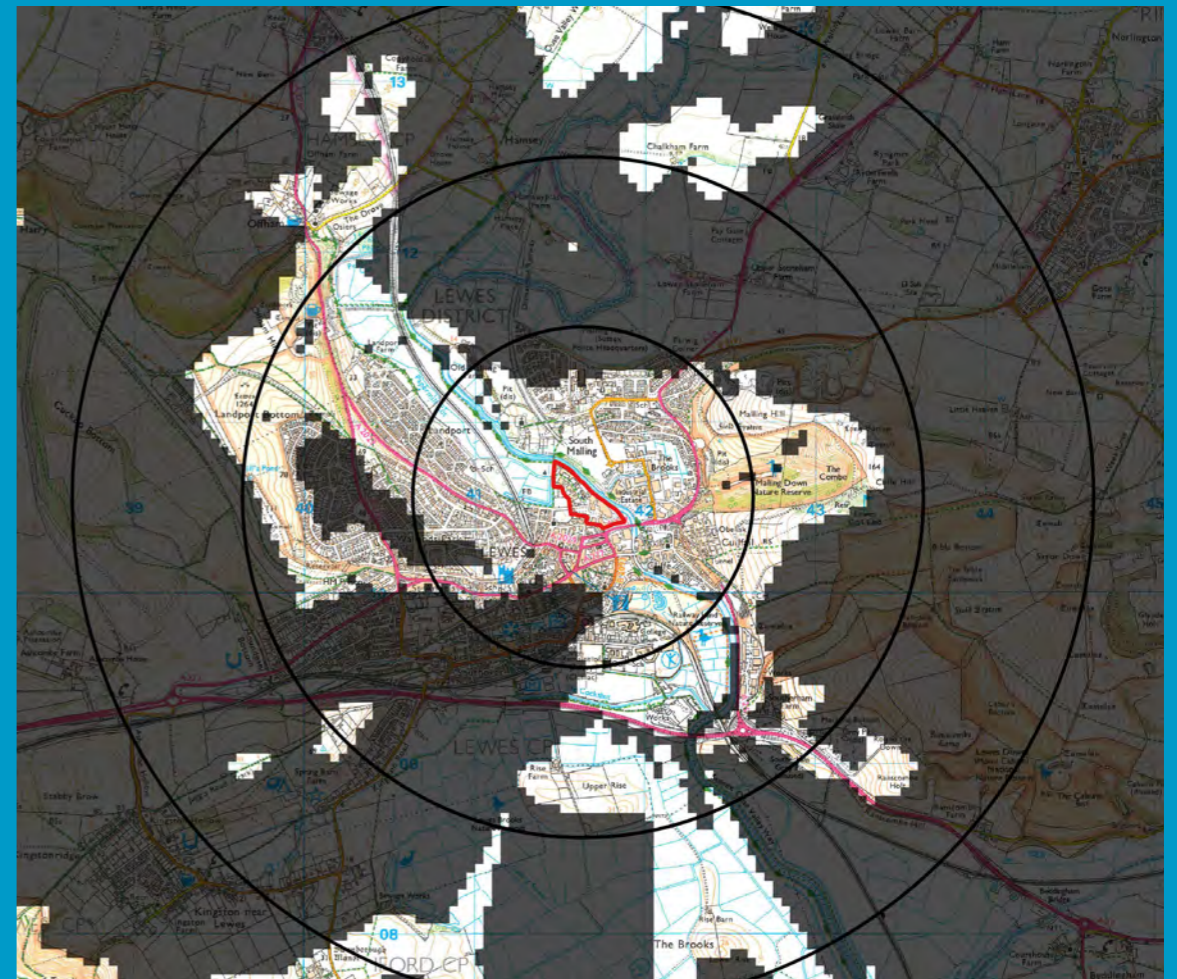


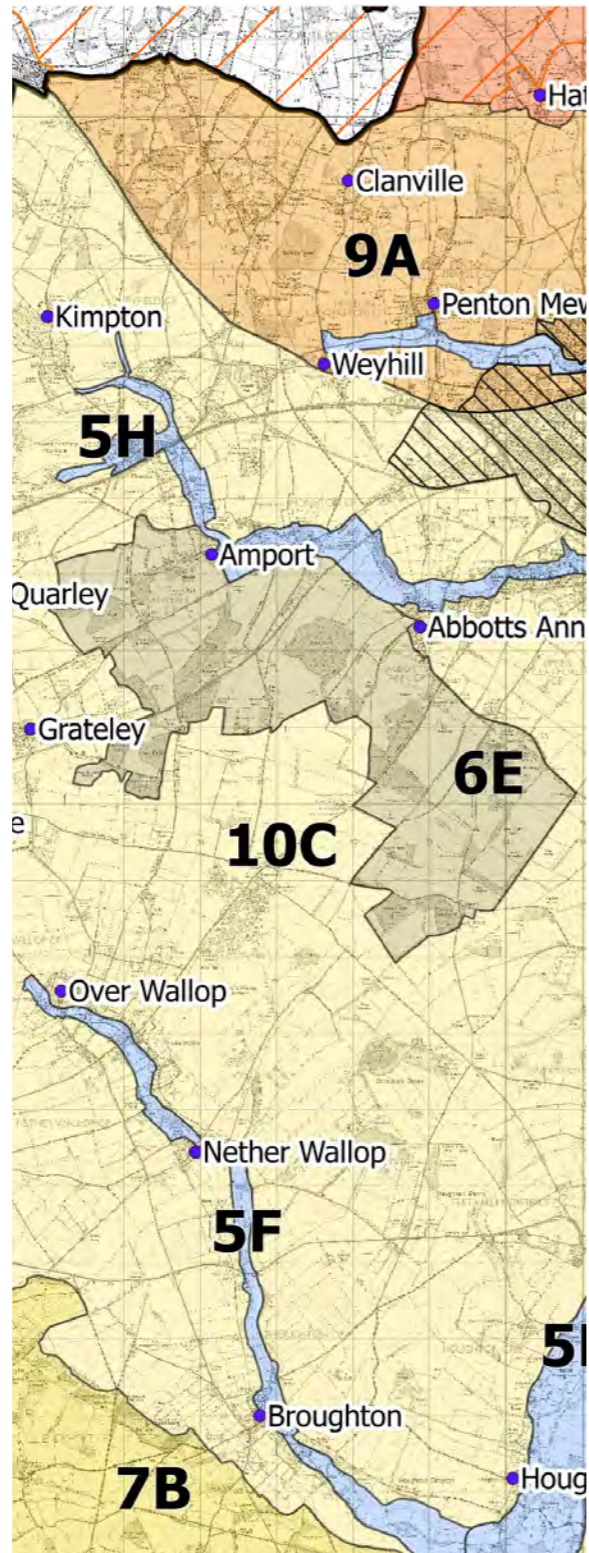
Roots Hall
Southend-on-Sea



Phoenix Project
Lewes

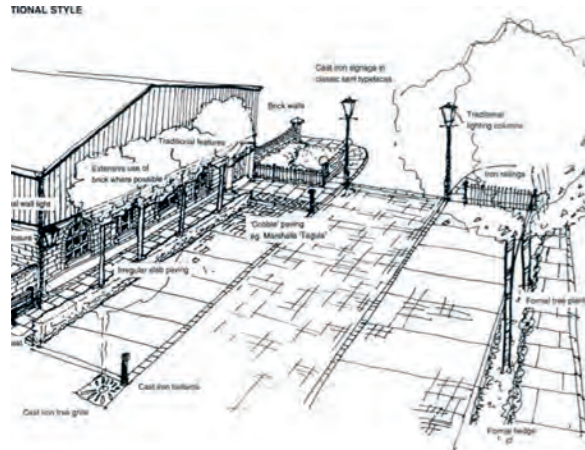
Advice through LVIA process to masterplan for Human Nature's ground-breaking carbon positive redevelopment of Lewes' NE Quarter.



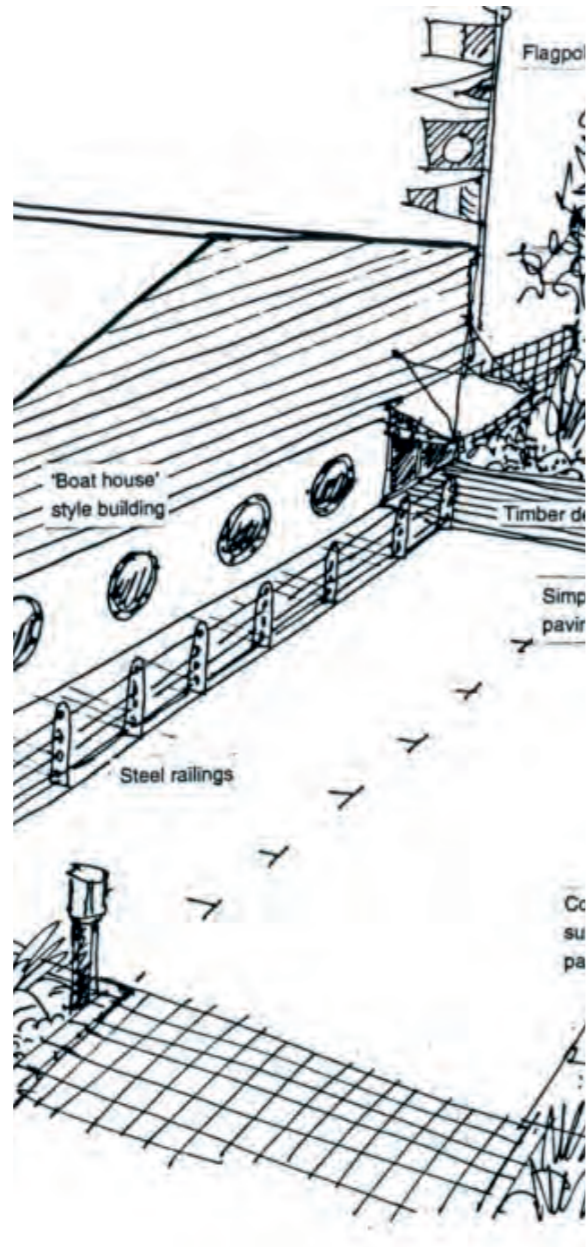
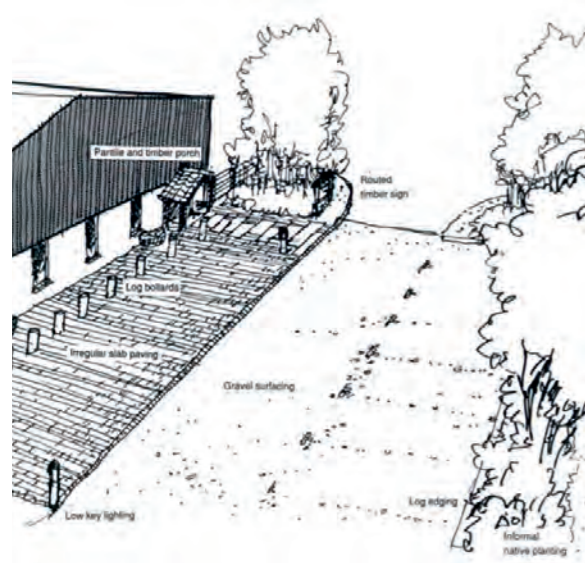


Landscapes Capacity Studies & Design Guidance





Building Integration Guidelines
Isle of Wight



Basingstoke Housing Capacity Study
with Bettina Kirkham
Hampshire

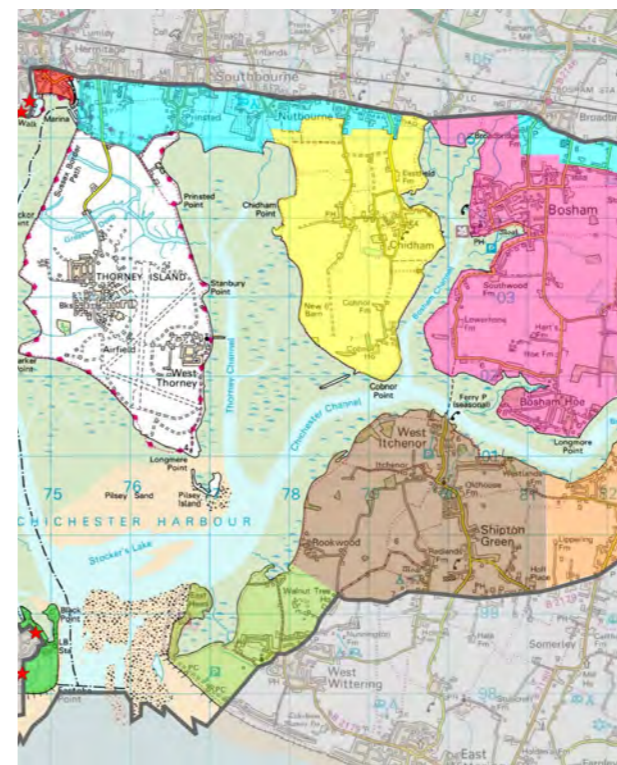
**A REPORT FOR BASINGSTOKE AND DEANE BOROUGH COUNCIL
LANDSCAPE CAPACITY STUDY 2010: SITE OPTIONS**

THE TERRA FIRMA CONSULTANCY LIMITED
KIRKHAM LANDSCAPE PLANNING LIMITED
BASINGSTOKE AND DEANE BOROUGH COUNCIL
NOVEMBER 2010

terra firma has produced a variety of supporting documents for local authorities, including landscape capacity studies, and design guidelines for new developments.



Chichester Harbour AONB Design Guidelines
West Sussex



General guidelines:



2. SCALE AND MASSING
The scale, mass and design of your house or extension will be critical to ensuring that the development is appropriate to the character of the AONB landscape. Houses of a greater size or grander appearance may lead to a loss of local character.

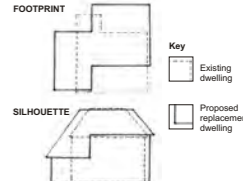
Where appropriate, your development proposals should complement surrounding development character. For example if your house plot is set within an area of predominantly single storey bungalows, then a two or three storey house or extension may not be acceptable.

The position within the plot is very important to consider, not only for the siting of the house or extension itself, but also to make sure that the privacy and amenities, such as light, of neighbouring properties are preserved.

3. GUIDANCE ON SIZE INCREASE
Extensions or replacement dwellings can have a significant impact on the wider AONB landscape, particularly when a significant increase in size is proposed. When considering proposed size increases, a guideline of a 50% increase above the existing footprint, and a 25% increase above the existing height (on any elevation visible from the wider landscape) is likely to be the maximum increase that may be acceptable (provided the property has not already been significantly extended).

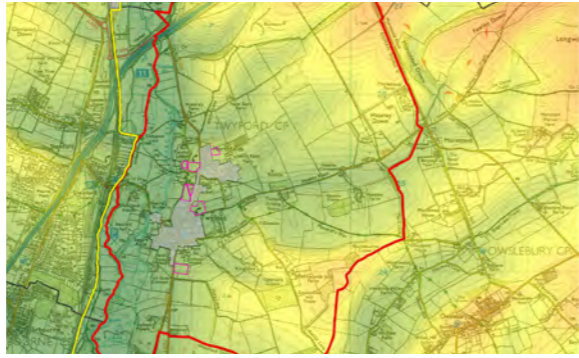
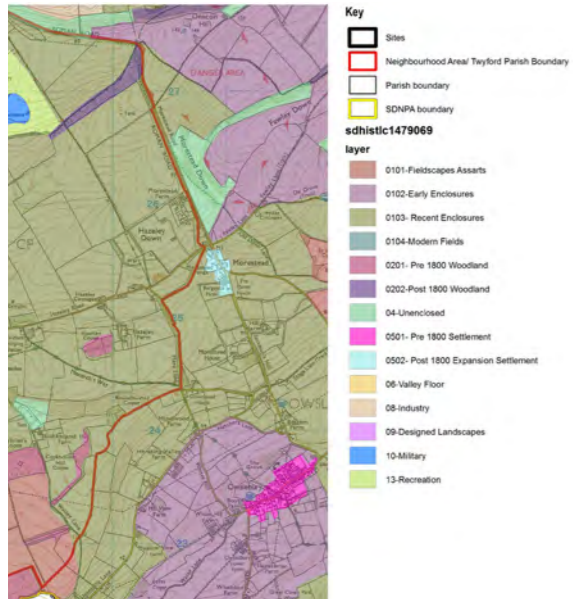
For replacement dwellings, applicants should submit proposed elevations and plans with the outline of the existing house superimposed on the plans, so that the proposed size increase is obvious. The increase will be assessed on its impact as viewed from the wider landscape: this might be from the water, footpaths, or across open countryside.

The acceptability of any increase in size (whether within the guideline limits or not) will be dependent on whether the site can accommodate the increase while still respecting local character by reflecting the surrounding pattern of development and spaces between buildings. Acceptability will also depend on the setting of the site within the landscape, and the design, materials and finishes employed. Larger replacement dwellings or extensions will require careful thought about siting, silhouette, height, massing and articulation, particularly of roof lines. A glossary of terms is included on page 32.

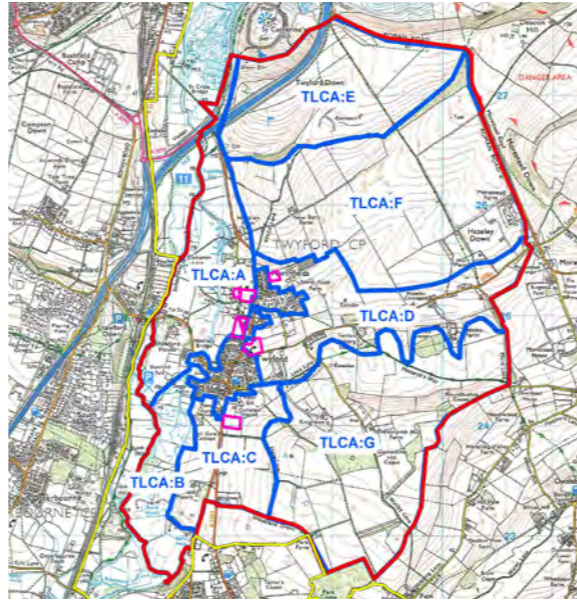


Flood risk
Predicted future rises in sea level mean that new properties may be required to be built on a higher level than existing ground, approximately 1 - 1.5m. Mitigation of the increased visual impact of this requirement is possible through careful design of roof lines, height of eaves and reduction of roof pitch.

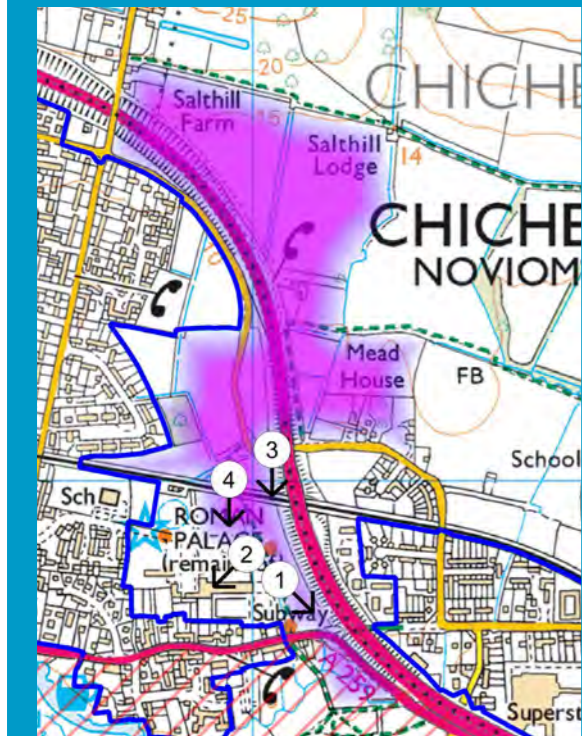
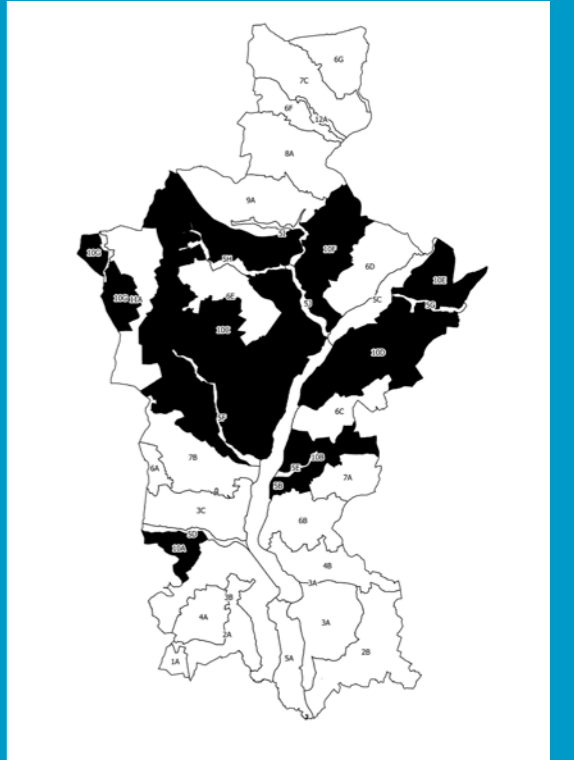
GUIDELINES FOR NEW DWELLINGS AND EXTENSIONS
Chichester Harbour Area of Outstanding Natural Beauty



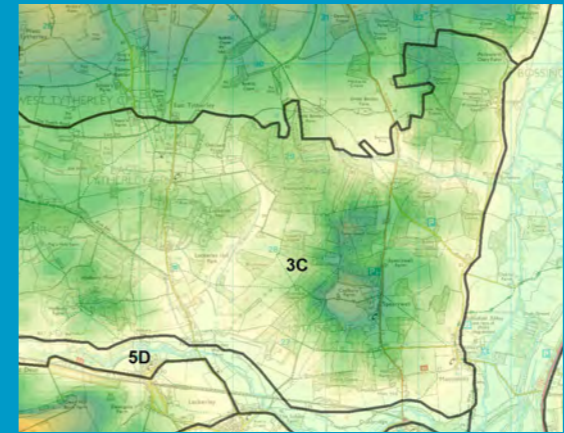
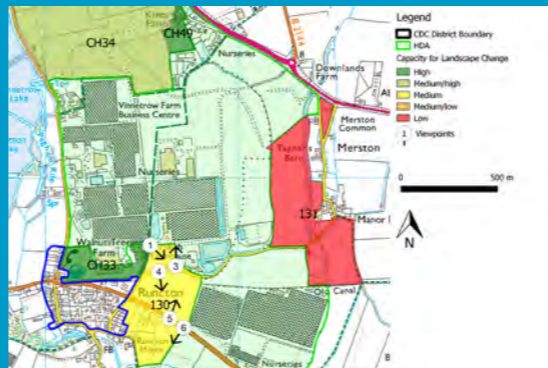
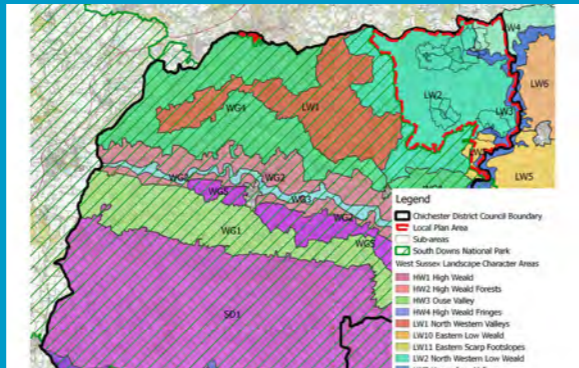
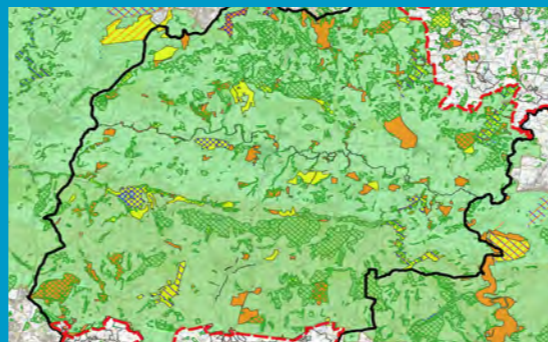
Twyford Parish Landscape Assessment Hampshire



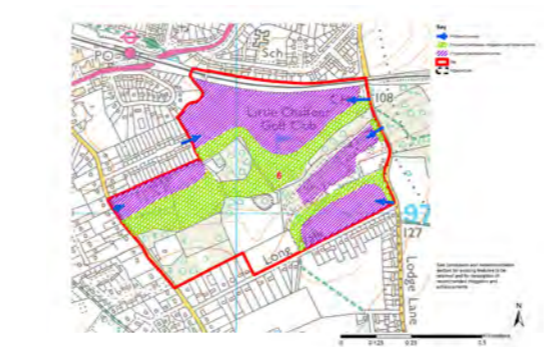
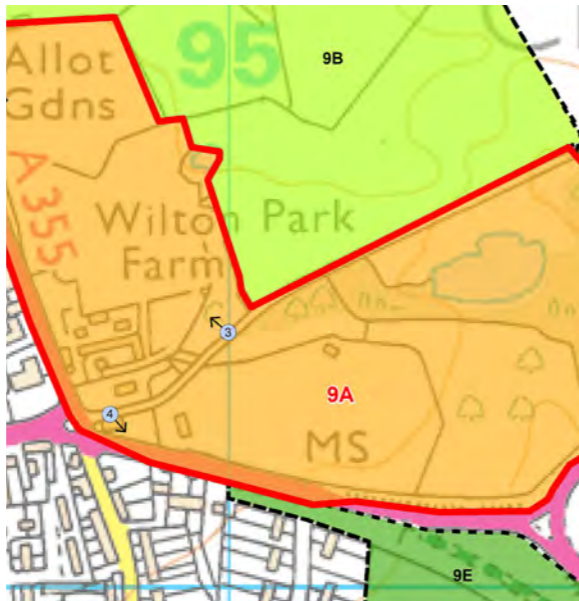
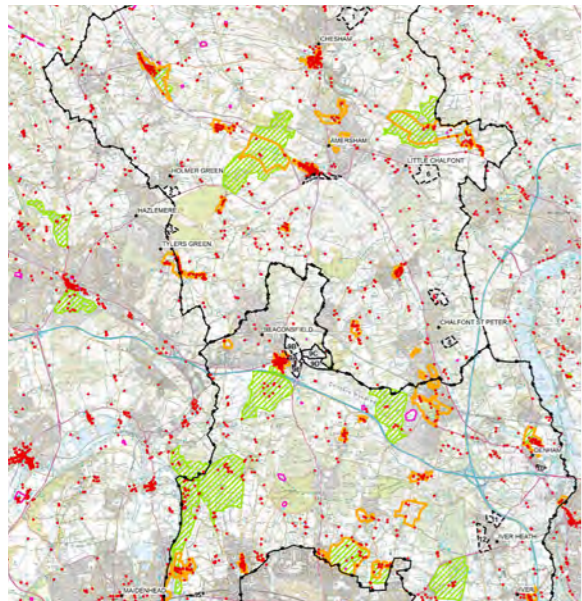
Test Valley Landscape Character Assessment 2018



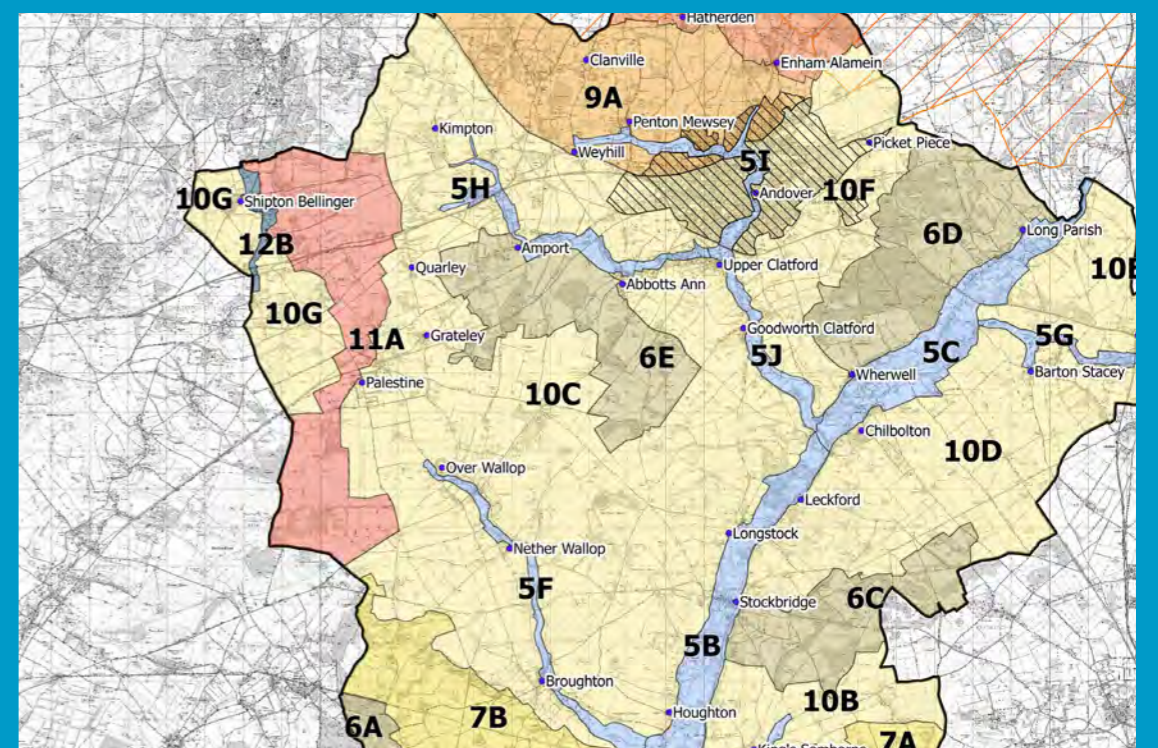
Chichester Capacity & Gap Studies Chichester District



Test Valley Borough Council Landscape Character Assessment Hampshire

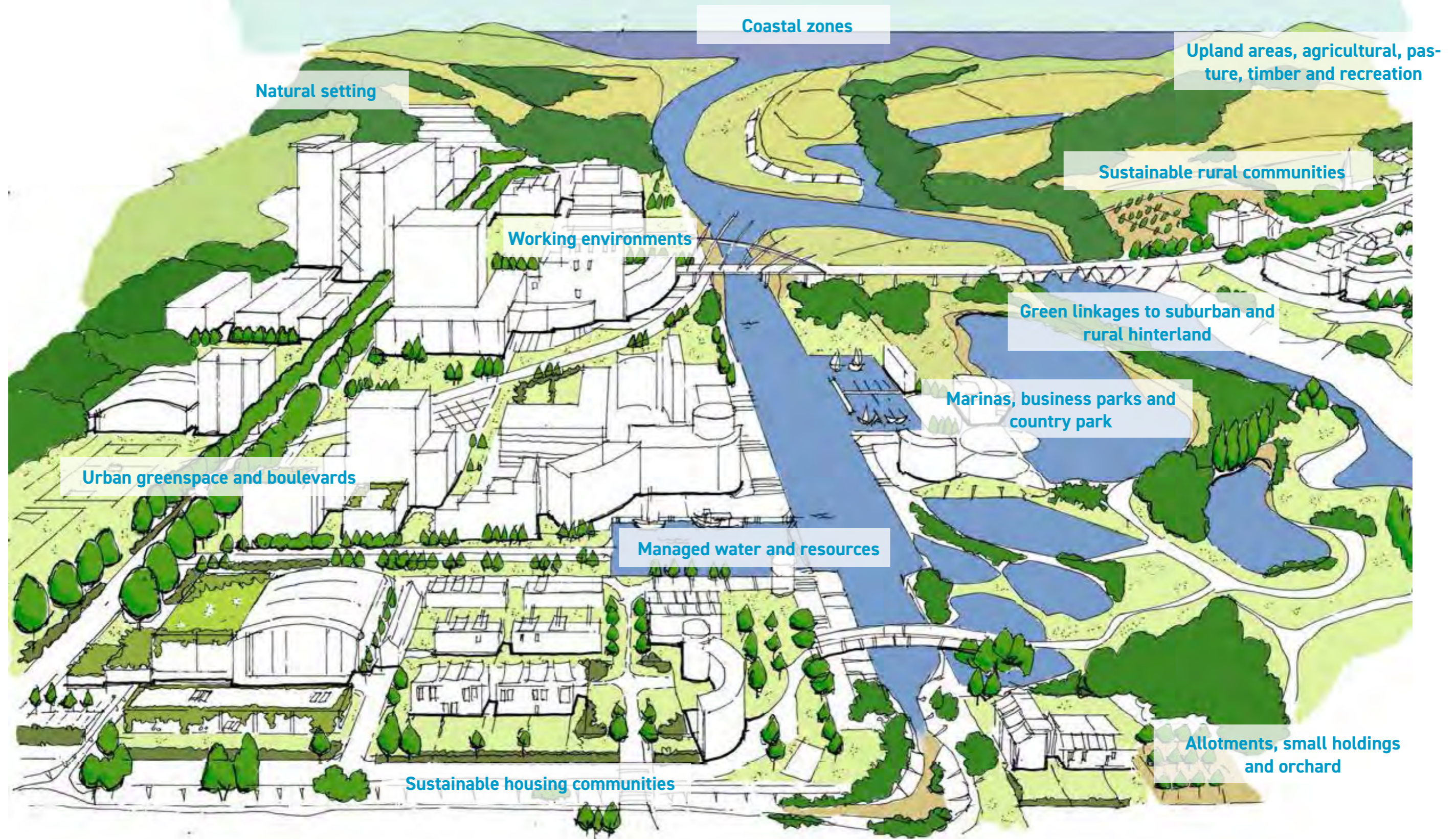


Chiltern & South Bucks Capacity Study Buckinghamshire



Green Infrastructure

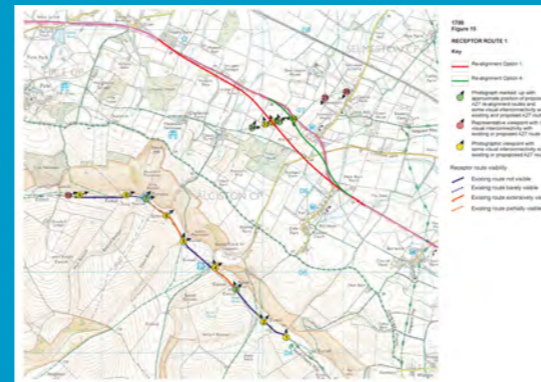
The interwoven fabric of nature, land-use and our settlements



Working with and within the South Downs National Park Authority



Settlement Studies and Local site plan allocations on behalf of SDNPA

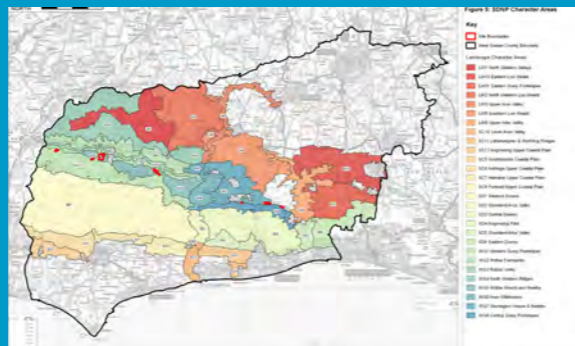
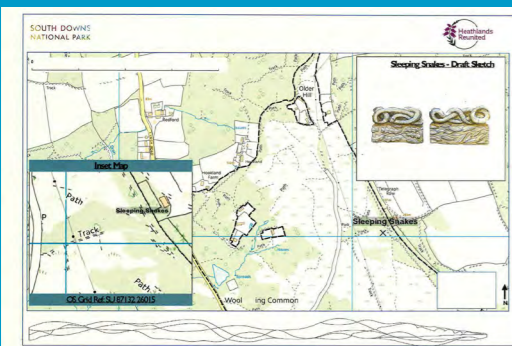


Evidence to support SDNPA response to proposed major Highway improvements

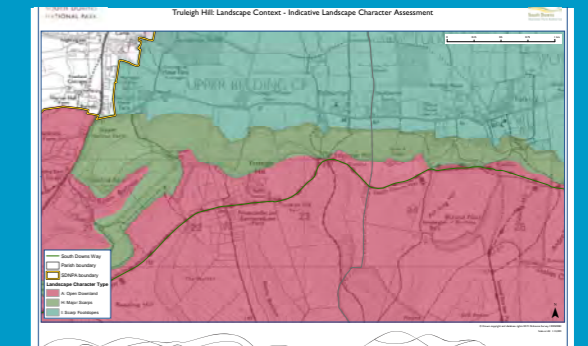
Based within the South Downs National Park, terra firma has not only represented countless clients in seeking Planning Permission but has had numerous appointments to assist the Authority in responding to applications on their behalf.



Butser Ancient Farm application to SDNPA



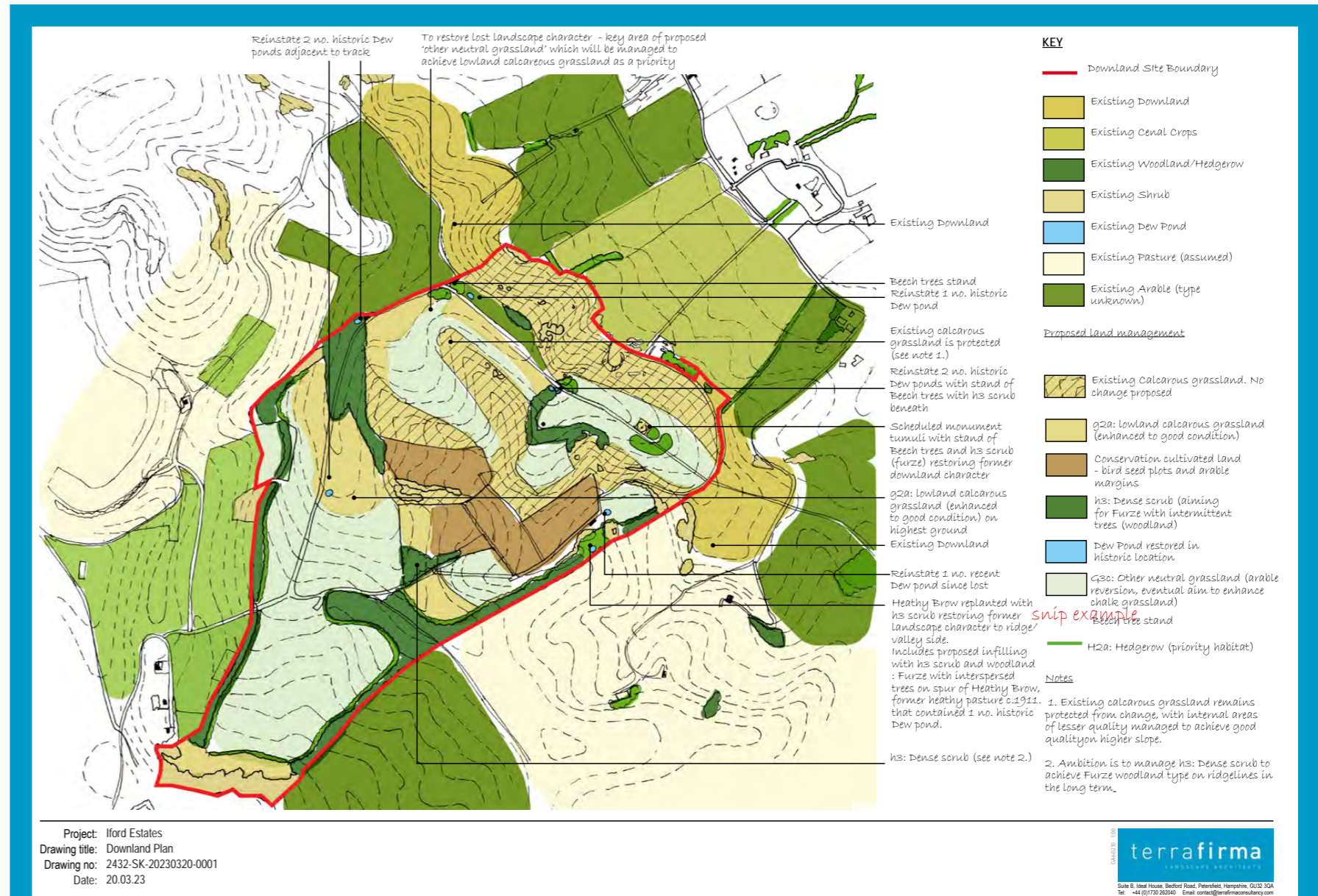
- On behalf of SDNPA
- Truleigh Hill Landscape Project
 - Soft Sand Quarry Landscape Assessment
 - Heathland Reunited Sculpture Project





SDNPA Viticulture
South Downs National Park

Landscape input to Vinescape's study for the future of the wine industry in the national park, including climate change modelling.



VITICULTURE GROWTH IMPACT ASSESSMENT: SUMMARY REPORT

Visual impacts of viticulture on the South Downs National Park landscape

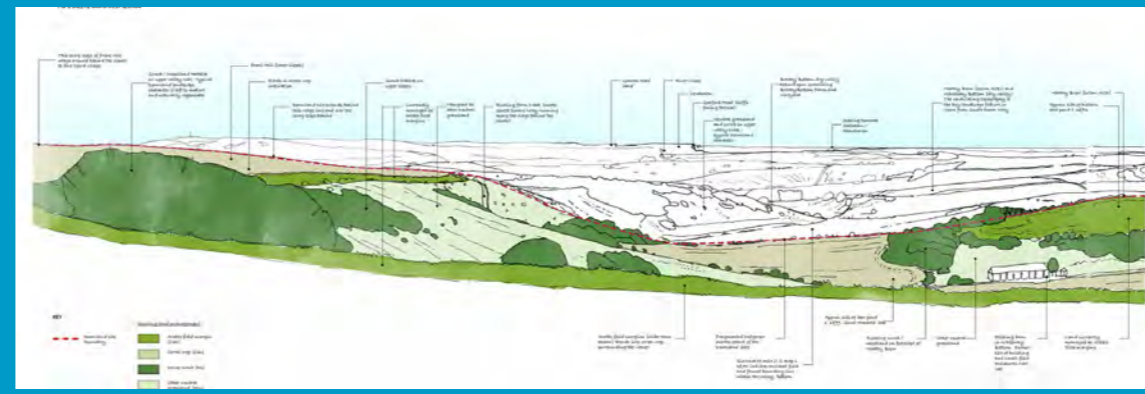
The fundamental character of the South Downs, such as their open quality, could be affected by vineyards. The raised, linear nature of vines and trellising is very different to arable crops or pastureland, and the report found that there is potential for visual degradation if the scale of vineyards is too extensive or if they are inappropriately located. The study includes several iconic National Park views, in which potential for viticulture exists, to understand how vineyards could appear or be integrated within the landscape. One example is set out to the right.

These images show the visual impact of vineyards on the landscape. Where they are well placed and sensitively proportioned, they integrate well. However, to address a potential loss of openness, tranquillity, or key views, the report recommends that landscape integration is given significant consideration by those establishing vineyards, with the aim of minimising any negative impacts.

OUSE VALLEY, NEAR LEWES (ORIGINAL IMAGE)

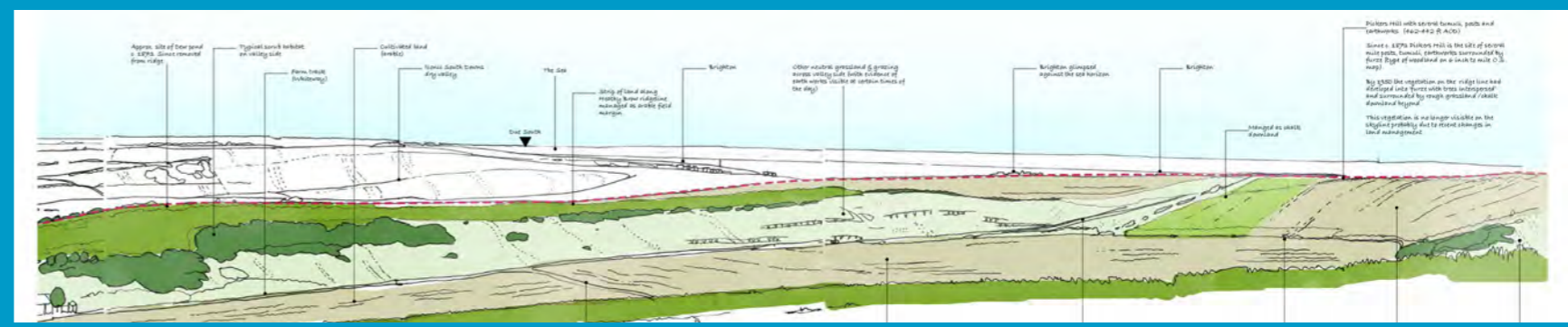


OUSE VALLEY, NEAR LEWES – ARTIST'S IMPRESSION, SHOWING A VINEYARD IN THE CENTRE



Iford Estate Lewes

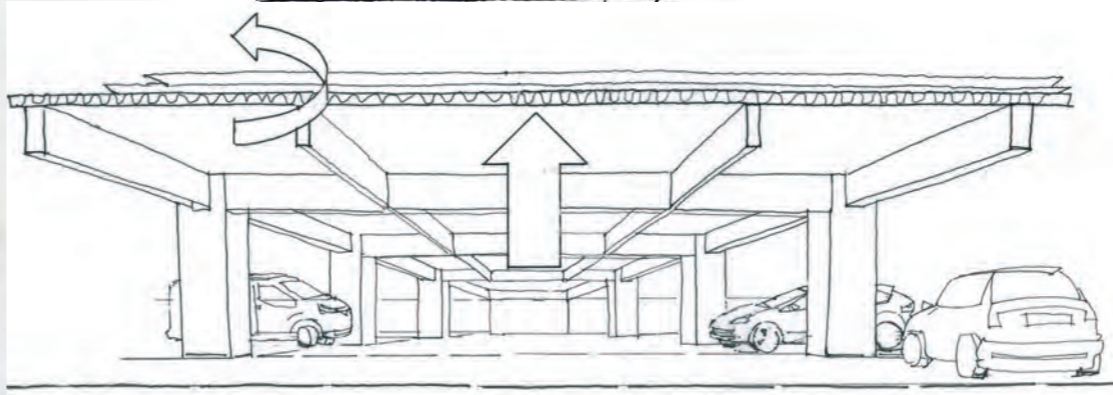
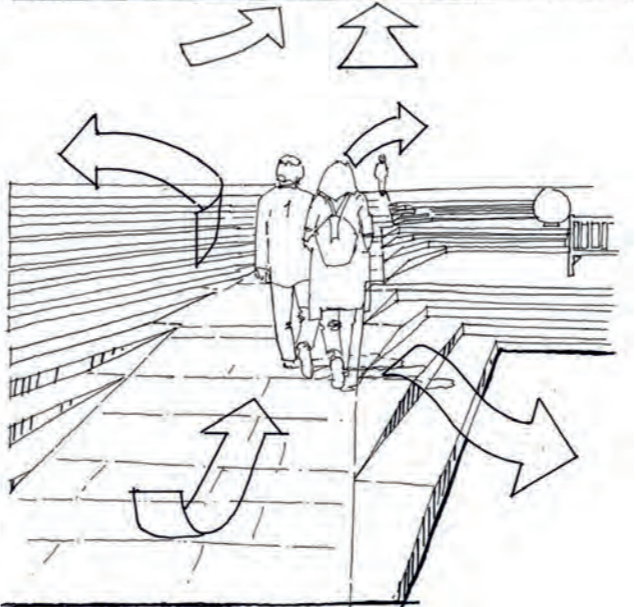
Landscape advice to 800ha nature enhancement and restoration project using Biodiversity Net Gain to fund transformative landscape-scale change.



Complex problems, simple solutions

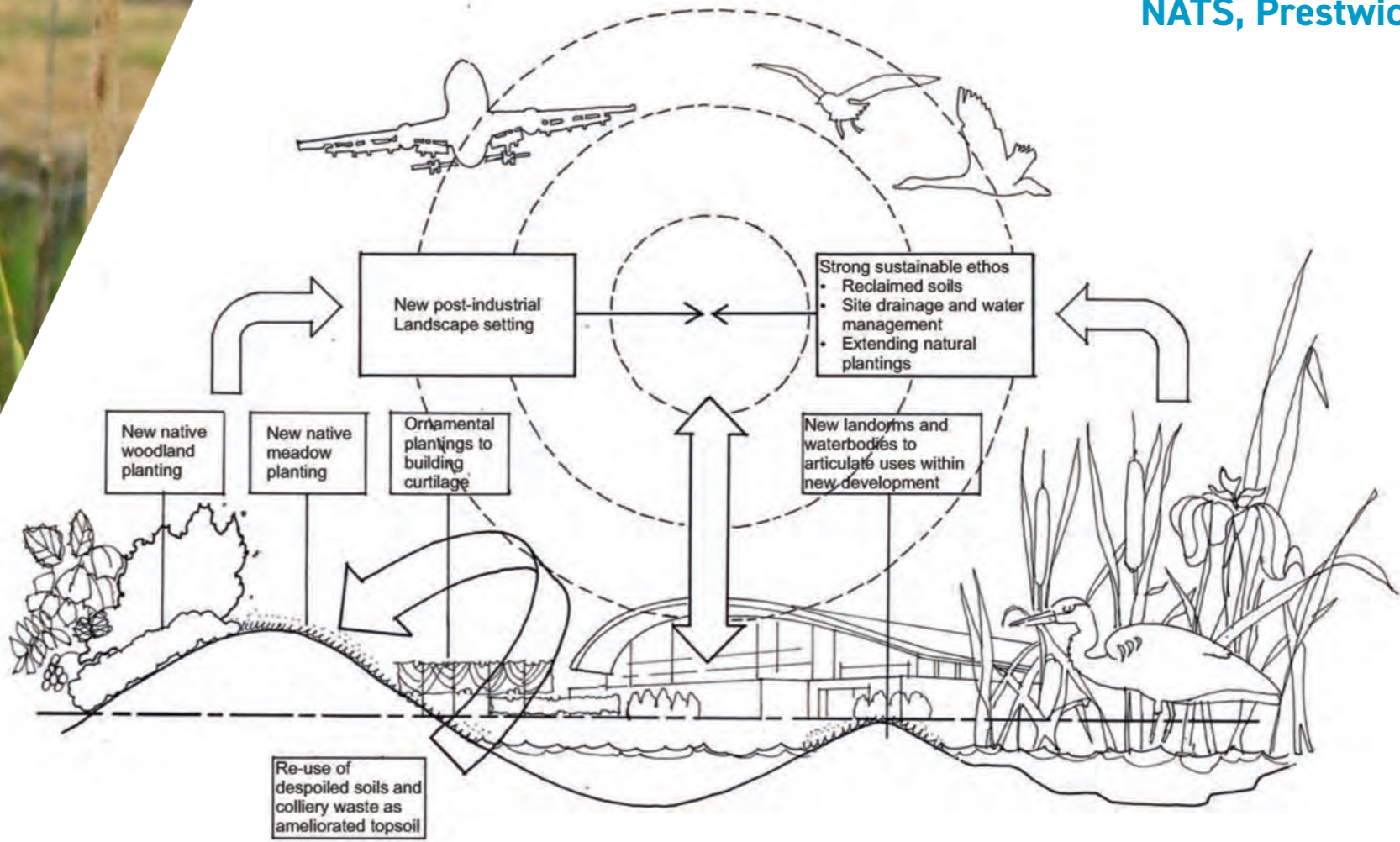
Petershill, City of London

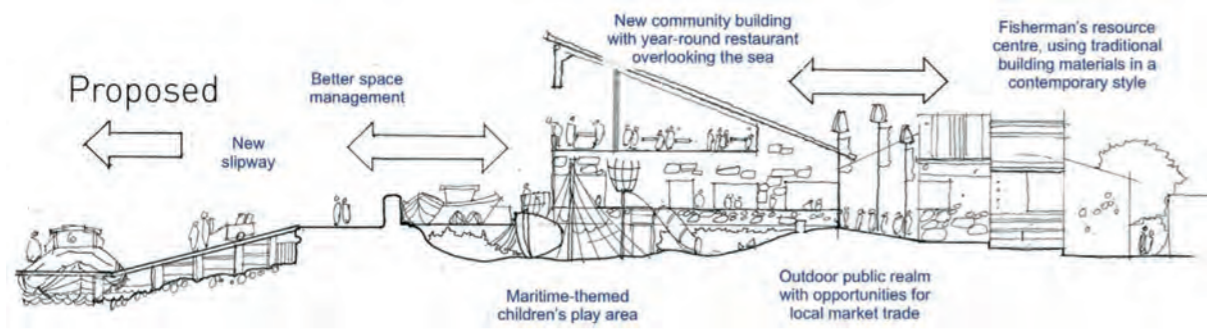
- Multi-directional steps arrangement
- Predominant route allowing ramp access at 1:20+ to avoid handrails
- Platforms created at regular intervals to allow rest and activity
- Generously proportioned steps allow sitting opportunities



Sustainability

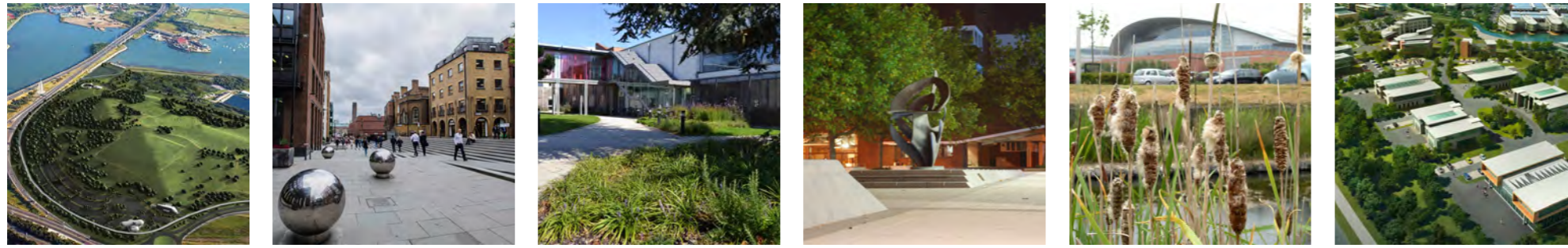
NATS, Prestwick





Sense of place

East Beach, Selsey



terrafirma

LANDSCAPE ARCHITECTS



Get in touch

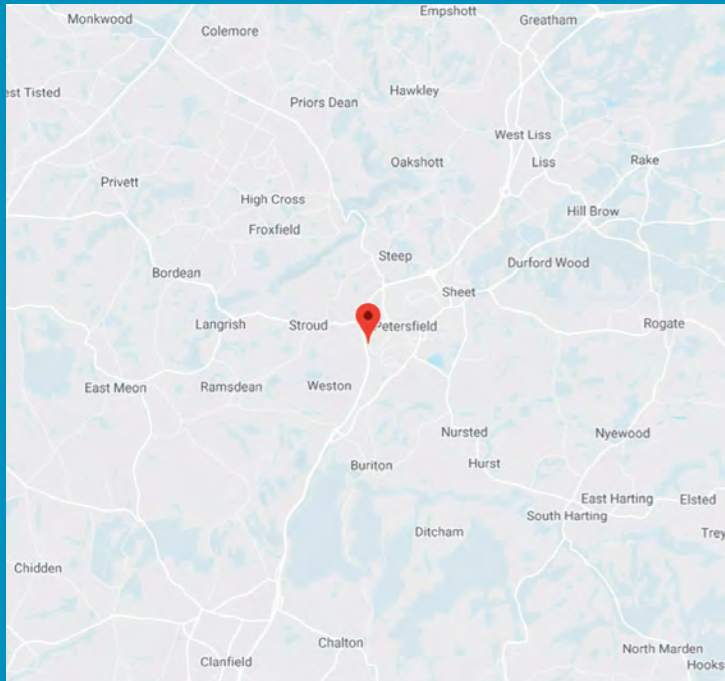
T: +44 (0) 1730 262040
W: www.terrafirmaconsultancy.com
E: lionel@terrafirmaconsultancy.com



Our Offices

The terra firma Consultancy Ltd

Suite B Ideal House
Bedford Road
Petersfield
Hampshire
GU32 3QA
United Kingdom

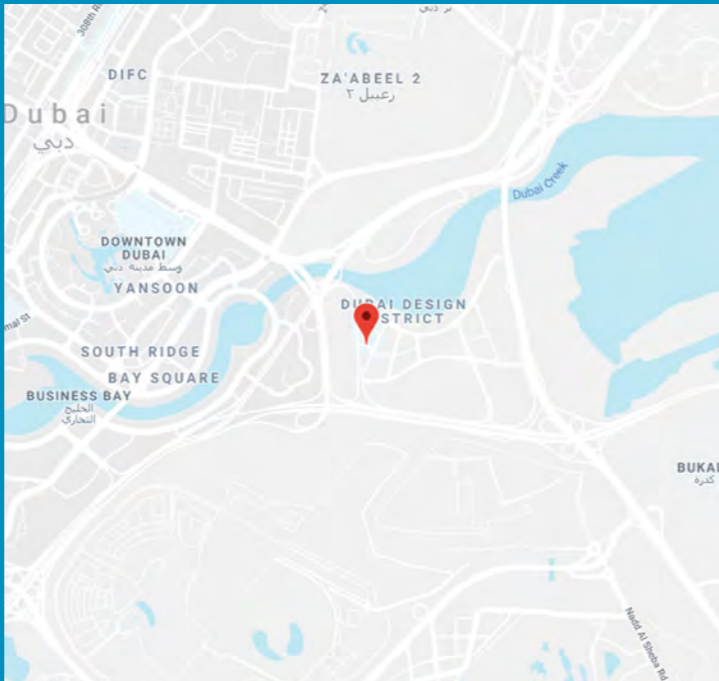


**Lionel Fanshawe,
Robyn Butcher & Alison Galbraith**

lionel@terrafirmaconsultancy.com
robyn@terrafirmaconsultancy.com
alison@terrafirmaconsultancy.com
+44 (0) 1730 262040
www.terrafirmaconsultancy.com

terra firma Landscape Architecture FZ-LLC

5th Floor
Building 03
Dubai Design District
PO Box 213532

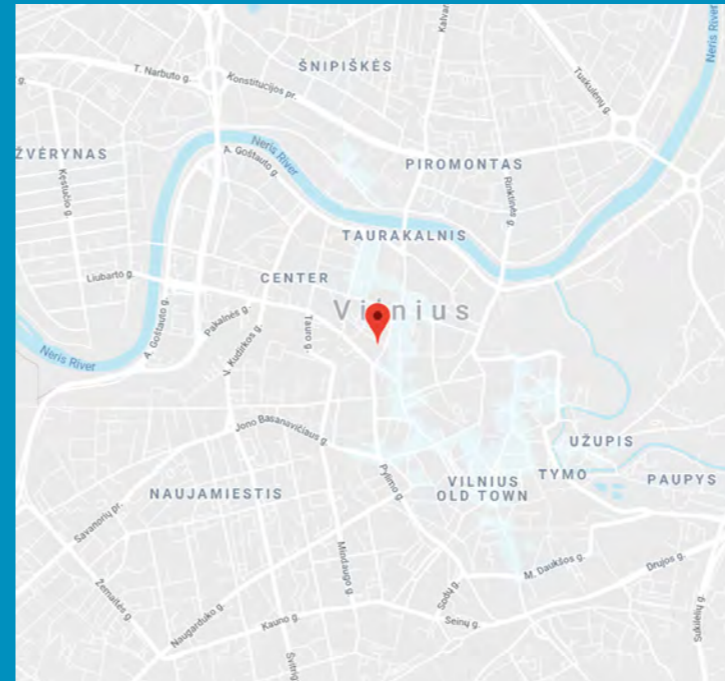


Alistair Walby

alistair@tfla.ae
+971 (0) 54 499 6161
www.tfla.ae

terra firma LT

Smetonos st. 2
LT-01115
Vilnius
Lithuania
EU



Linas Usas

linas@terrafirmalt.com
+370 5 250 3637
www.terrafirmalt.com

terra firma works worldwide at all scales and in all sectors, employing over 30 people across three offices - all able to respond to the most challenging tasks.

terra firma works globally, at all scales, in every sector, for government departments (including the MOD and FCO), local governments, private clients, NGOs, community groups and individuals.

Abri Housing
Affinity Sutton
Alfred Homes
All England Lawn Tennis Club
Arun District Council
ASDA
Augur Buchler
Aurora Developments
BAA
Barclay St James
Bargate Homes
Barnardo Developments Ltd
Barratt David Wilson
Barton Willmore
Basepoint Plc
Basingstoke and Deane
Bedales School
Beech Neighbourhood Plan Steering Group
Bellway Homes
Bellwood Homes
Berkeley Homes
Bewley Homes
BHASVIC
Boodai Constructions (Kuwait)
Bourne Leisure
Bouygues
Bovis
Brighton and Hove City Council
Brighton General Hospital
Brixton Plc
Brookwood Cemetery
Brookwood Park
Bugler Developments
Burford Plc
Butser Ancient Farm
Cala Homes
Cambridge Biomedical Campus
Celtique
Central Bedfordshire District Council
Chichester District Council
Chiltern District Council
Churchill Retirement Living
Claritas
Colten Developments
Comer Homes
Cornwall County Council
Corporate Estates
Crayfern
Cyprus Cultural Centre
Daneshill School (Wellington Estate)
Development Securities Plc
Domaine Developments Drew Smith
East Hampshire District Council

East Sussex County Council
East Wittering & Bracklesham Parish Council
Eastleigh Borough Council
Enfield Council
Engie
Faithful+Gould
Forestry Commission
Friends of the Elderly
Frontier Estates
Froyle Parish Council
G&L Homes
Galliford Try
Gentian
Gifford
Gilbert White Museum
Glenmore
Goodwood Estate
Greater Brighton Metropolitan College
Grupa 93
Gryphon Land
Guildmore
Hammersmith and Fulham Borough Council
Hampshire and Regional
Hampshire County Council
Hampshire Primary Care Trust
Havant Borough Council
Henley Royal Regatta
HORIBA MIRA
Housing 21
Human Nature
IBI
Inmind
International School of London
Interserve
ISG
Isle Of Wight Council
Jacobs
Jansons
Jesus College (Oxford)
Kent College
Kier Build
Kier Southern
Kind and Co
Langmead
Leadbitter
Leonard Cheshire
Lewes District Council
Linden Homes
Lochailort
London Borough of Croydon
London Borough of Southwark
London Clubs International
London Southend Airport

Londonewcastle
LSC Framework
M&G Real Estate
Magdalen College
Maggie's Centres
Mast Pond Wharf Ltd
Matterley Estate
McCarthy and Stone
MEPC
Merivale Moore Plc
Metis Homes
Metropolitan
MICA Architects
Michael Brady
MITIE
Morgan Ashurst
Morgan Sindall
National Trust
NATS
Newbridge
Newhaven Town Council
Newton Valence Farm
Nurture
Oakdene
Old Thorns Hotel Group
One Horton Heath
Osborne
Pacalis
Parker Farms
Peer Investments
Peter Brett Associates
Petersfield Community Land Trust
Petersfield Society
Pilgrims Friend Society
PNH Properties Group
Portsmouth City Council
Princes Mead School
Prosperity (Moscow)
QPR Football Club
Radian Housing Association
Raglan Housing Association
Railtrack
Ramboll
Rectory Homes
Re-Format LLP
Regional Investments Plc
Renaissance
Ridge
Rowlands Castle Neighbourhood Plan Group
Royal Grammar School, Guildford
Sanya Tianya Haijiao Tourism Devpt.Co.Ltd
Scats
Schroders

Seaford College
Seaward Property
SEGRO
Sellar Property Group/Portsmouth FC
SevenCapital
Sigma Homes
Solidere (Beirut)
Sonning Common Parish Council
South Buckinghamshire District Council
South Downs National Park Authority
South Leigh Parish Council
South Oxfordshire District Council
Southend FC
Southwick Estate
Sovereign Centros
St Swithun's School
Stansted Park
Stonegate Homes
Stripe Consulting
Summix
Surrey & Borders NHS Foundation Trust
Surrey County Council
TA Fisher
Tandridge District Council
Taylor Wimpey
Test Valley Borough Council
The Classic Home Company
The ONYX Environmental Trust
The Portsmouth Partnership
The Sustainability Centre
Tilfen Land
Twyford Parish Council
University of East London
University of Oxford
University of Portsmouth
Vale of White Horse District Council
Village Foundations
Warner Leisure
Waterbridge
West Berks District Council
West Sussex County Council
West Waddy ADP
West Yorkshire Police
Willmott Dixon
Winchester City Council
Winchester City Council
Woking Borough Council
Yehudi Menuhin School
YMCA

“Landscape architecture is **central to our quality of life**. It affects the way we **live**, the way we **interact** with each other, how well we **work**, and how much we **enjoy** and **look after our environment**. These are responsibilities we take **very seriously** at terra firma.”

terrafirma
LANDSCAPE ARCHITECTS

A photograph of a wooden deck with a chair, set in a grassy field with trees in the background. The image has a blue tint. The text 'terrafirma' is overlaid in white, lowercase letters. Below it, 'LANDSCAPE ARCHITECTS' is written in white, uppercase letters. At the bottom, the website 'www.terrafirmaconsultancy.com' is written in white, lowercase letters.

terrafirma

LANDSCAPE ARCHITECTS

www.terrafirmaconsultancy.com